

Randy Sade  
Research Analyst

Office of

This report includes graphs and tables of degrees awarded by each campus since FY 2008. The first table provides a summary of degrees by level for each campus, while the second table series gives the number of awards by the colleges of each campus. The \_\_\_\_\_ reflects the number of degrees awarded by academic department. These tables also show the average number of degrees over a 3, 5, & 10-year period and the percent change in FY 2017 that is relative to the 10-year average.

The highlights of the report from the Table 1 series include:

The University of Missouri System awarded 18,426 degrees and certificates, a 12% growth in FY 2017 relative to the 10-year average.

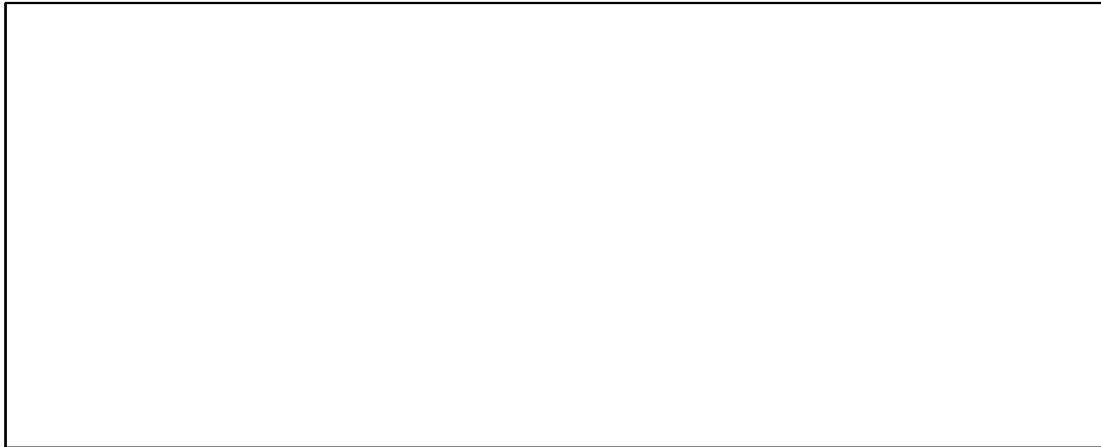
Relative to the 10-year average, the number of FY 2017 doctorate degrees for the University of Missouri System increased 31% and graduate certificates increased 35%.

Comparing FY 2017 degrees to the 10-year averages, the most notable increases are: bachelors degrees awarded are up 15% at UM-Columbia and 18% at Missouri S&T; master degrees are up 8% at UM-Columbia and 14% at Missouri S&T; and doctorates are up 30% at UM-Kansas City, and 57% at Missouri S&T.

First Professional degrees at UM-Kansas City increased 4% when comparing FY 2017 to the 10-year average.

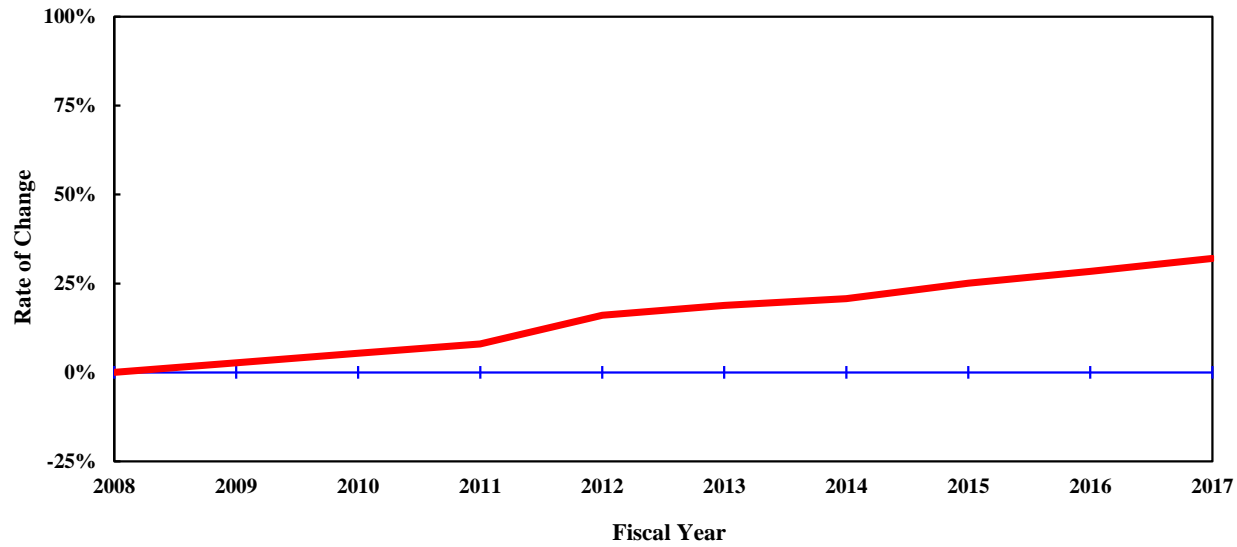
Based on the 10-year averages, Graduate Certificates continues to grow in FY 2017 with a 46

Notes Regarding Use of the Report:



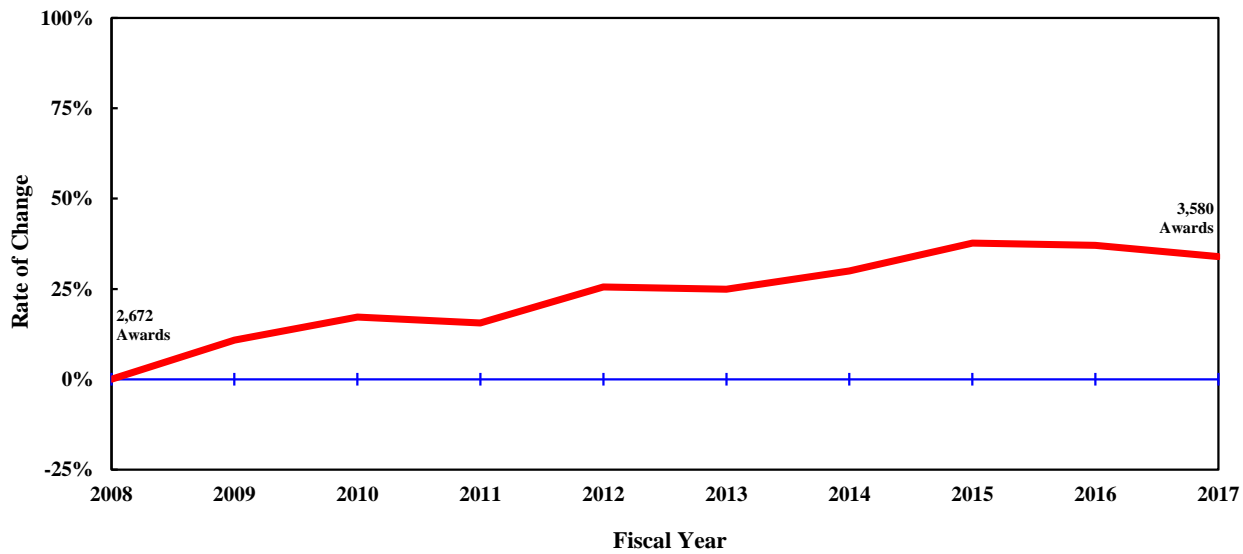
DEGREE	FY 2008	FY 2009	FY 2010	FY 2011	FY 2012	FY 2013	FY 2014	FY 2015	FY 2016	FY 2017	3-Year	<u>Average</u> 5-Year	10-Year	Change in FY17 relative to the 10-Year Avg.
<b>UNIVERSITY OF MISSOURI SYSTEM</b>														
Undergrad. Certificate	3	2	1	4	2	2	23	55	44	56	51.7	36.0	19.2	192%
Bachelors	8,994	9,289	9,604	9,699	10,317	10,543	10,733	11,360	11,654	11,546	11,520.0	11,167.2	10,373.9	11%
Graduate Certificate	321	438	520	539	623	781	740	780	839	869	829.3	801.8	645.0	35%
First Professional	749	763	800	818	790	847	837	876	833	829	846.0	844.4	814.2	2%
Masters	3,432	3,620	3,608	3,870	4,069	3,919	4,013	4,204	4,330	4,217	4,250.3	4,136.6	3,928.2	7%
Education Specialist	102	148	123	100	104	115	113	122	100	93	105.0	108.6	112.0	-17%
Doctorate	510	487	519	557	610	660	640	712	720	816	749.3	709.6	623.1	31%
<b>Total, All Awards</b>	<b>14,111</b>	<b>14,747</b>	<b>15,175</b>	<b>15,587</b>	<b>16,515</b>	<b>16,867</b>	<b>17,099</b>	<b>18,109</b>	<b>18,520</b>	<b>18,426</b>	<b>18,351.7</b>	<b>17,804.2</b>	<b>16,515.6</b>	<b>12%</b>

# UNIVERSITY OF MISSOURI



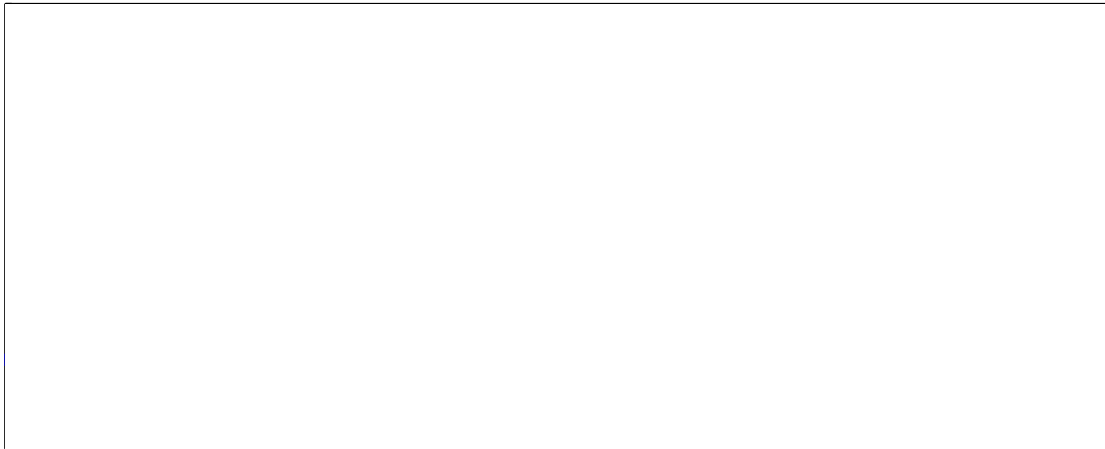
DEGREE	FY 2008	FY 2009	FY 2010	FY 2011	FY 2012	FY 2013	FY 2014	FY 2015	FY 2016	FY 2017	3-Year	<u>Average</u> 5-Year	10-Year	Change in FY17 relative to the 10-Year Avg.
<b>UNIVERSITY OF MISSOURI - COLUMBIA</b>														
Bachelors	4,779	4,855	4,963	5,087	5,528	5,692	5,769	5,995	6,283	6,331	6,203.0	6,014.0	5,528.2	15%
Graduate Certificate	69	88	142	162	179	225	226	239	225	266	243.3	236.2	182.1	46%
First Professional	303	307	304	306	299	332	339	346	308	313	322.3	327.6	315.7	-1%
Masters	1,421	1,506	1,515	1,513	1,631	1,515	1,580	1,571	1,619	1,684	1,624.7	1,593.8	1,555.5	8%
Education Specialist	34	57	59	53	43	63	65	82	51	56	63.0	63.4	56.3	-1%
Doctorate	326	306	322	365	367	411	390	435	416	500	450.3	430.4	383.8	30%
Total, All Awards	6,932	7,119	7,305	7,486	8,047	8,238	8,369	8,668	8,902	9,150	8,906.7	8,665.4	8,021.6	14%

# UNIVERSITY OF MISSOURI - KANSAS CITY



FY FY FY FY FY FY FY FY FY FY

Change in FY17

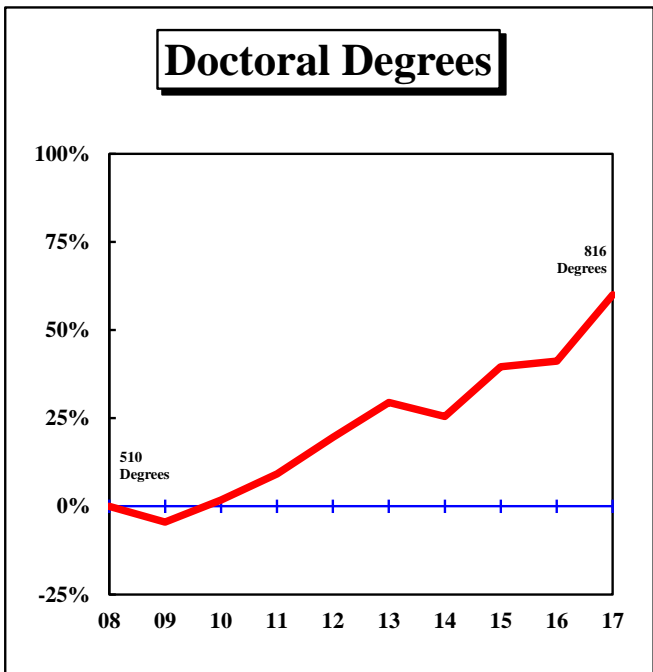
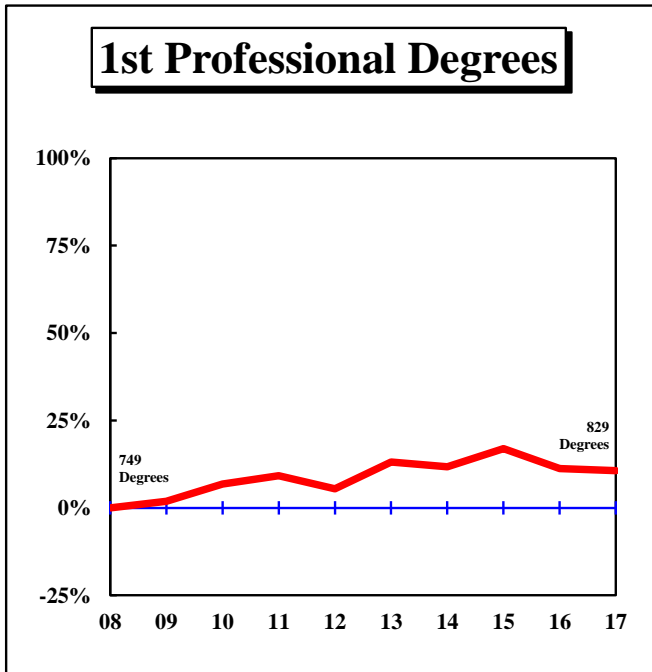
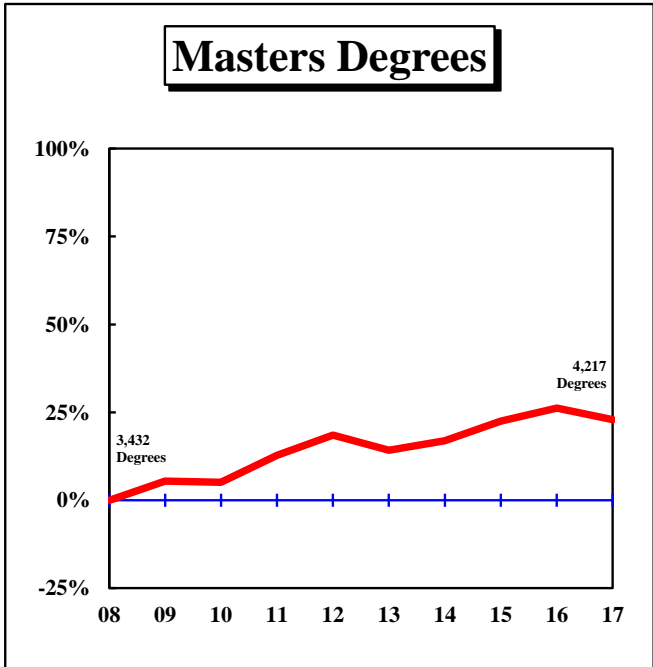
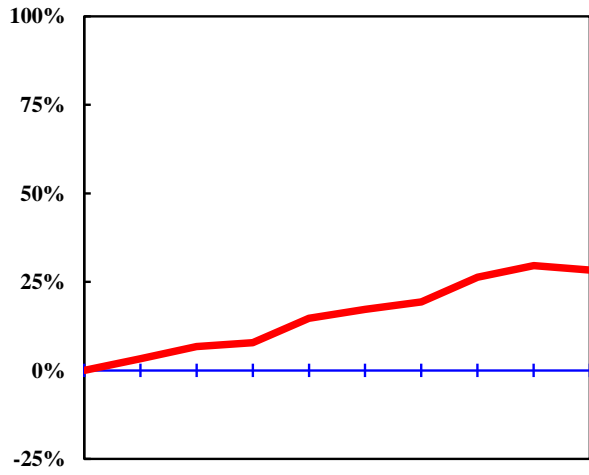


Change(C)/in(C)/l

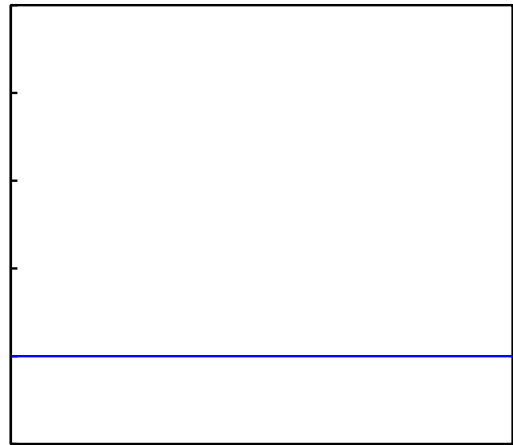
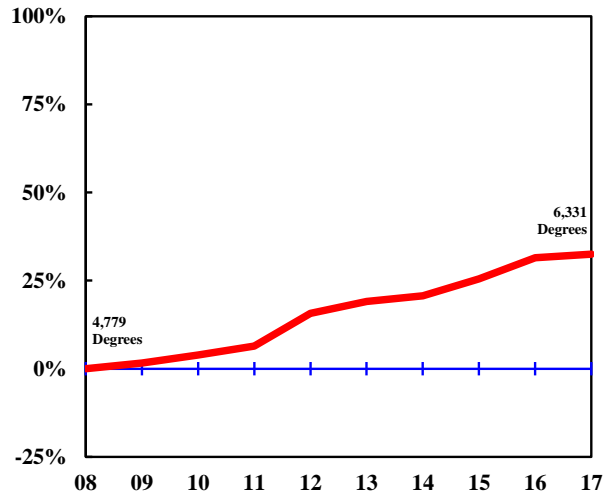
(

DEGREE	FY	FY	FY	FY	FY	FY	FY	FY	FY	FY	3-Year	<u>Average</u>			Change in FY17 relative to the 10-Year Avg.
	2008	2009	2010	2011	2012	2013	2014	2015	2016	2017		5-Year	10-Year	10-Year Avg.	
<b>UNIVERSITY OF MISSOURI - ST. LOUIS</b>															
Undergrad. Certificate						2	20	34	29	37	33.3	24.4	N/A		
Bachelors	2,016	2,018	2,011	2,092	1,963	1,974	2,020	2,246	2,252	2,071	2,189.7	2,112.6	2,066.3		0%
Graduate Certificate	64	80	82	71	96	88	80	87	116	123	108.7	98.8	88.7		39%
First Professional	38	44	41	44	47	40	39	41	45	43	43.0	41.6	42.2		2%
Masters	729	771	771	868	872	871	854	761	810	826	799.0	824.4	813.3		2%
Education Specialist	28	42	31	22	26	28	13	14	17	17	16.0	17.8	23.8		-29%
Doctorate	62	63	63	50	74	61	64	84	75	106	88.3	78.0	70.2		51%
Total, All Awards	2,937	3,018	2,999	3,147	3,078	3,064	3,090	3,267	3,344	3,223	3,278.0	3,197.6	3,116.7		3%

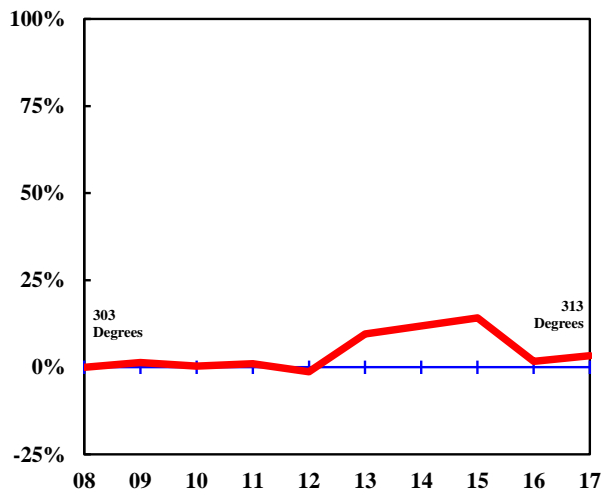




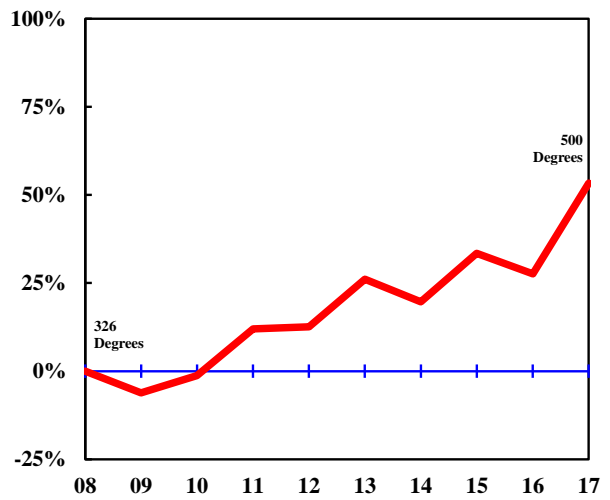
### Bachelor Degrees



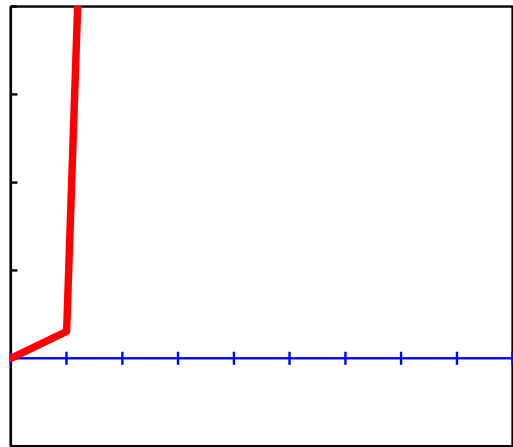
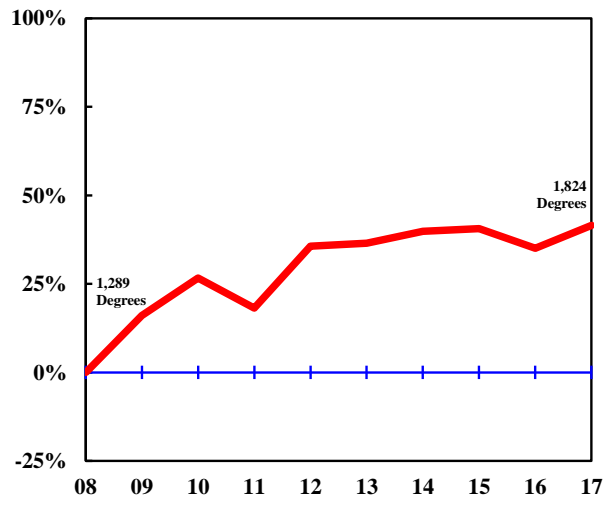
### 1st Professional Degrees



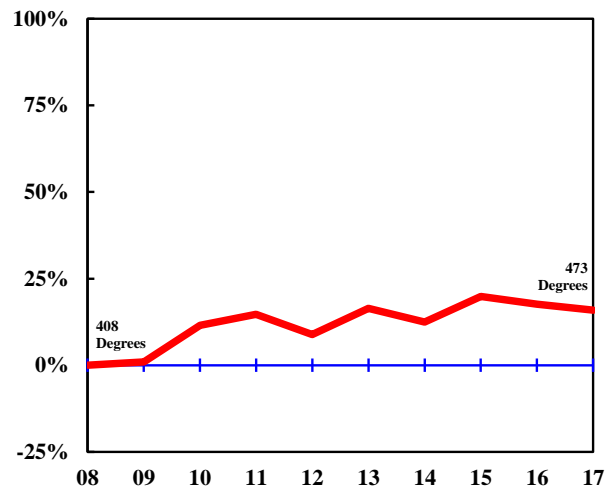
### Doctoral Degrees



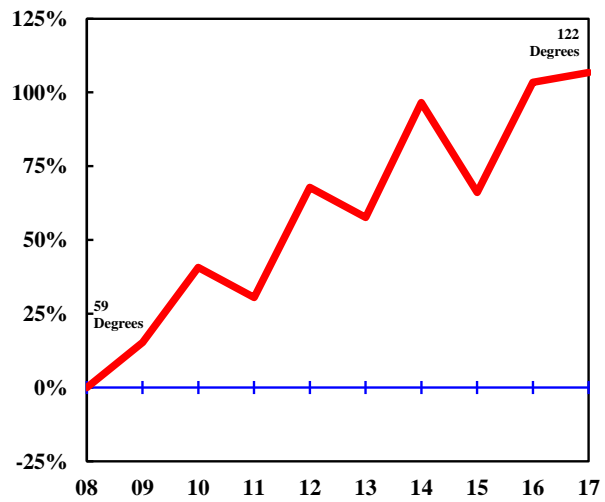
### Bachelor Degrees



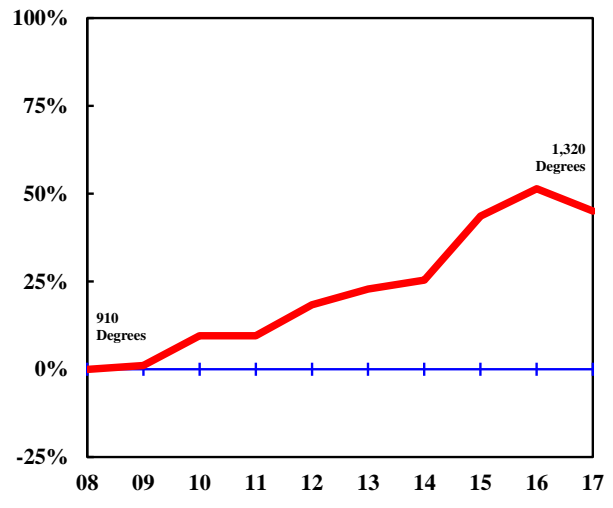
### 1st Professional Degrees



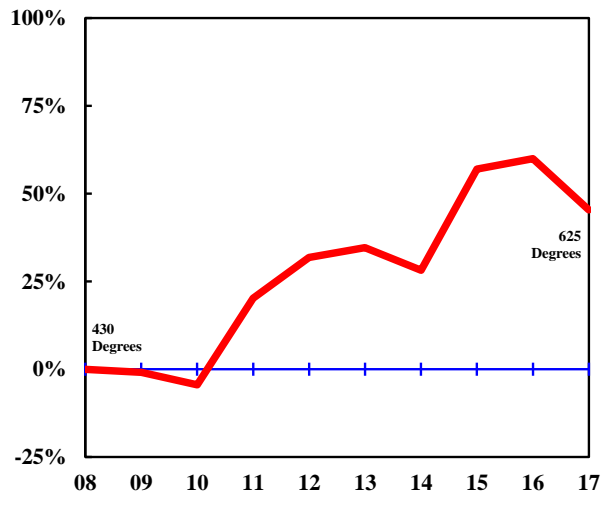
### Doctoral Degrees



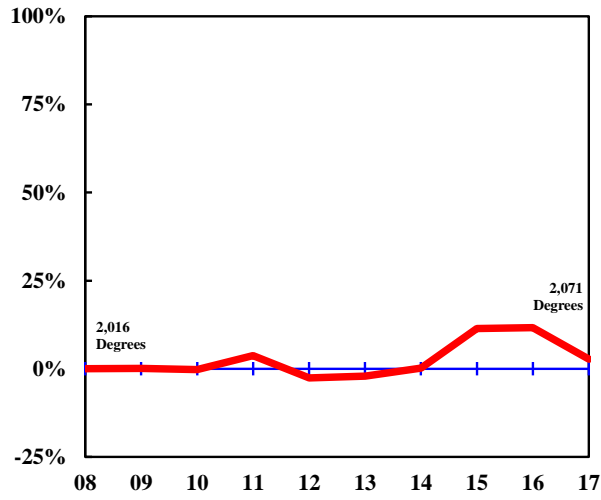
### Bachelor Degrees



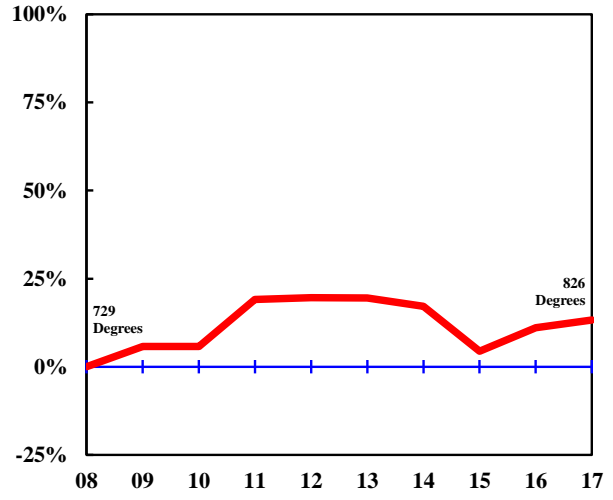
### Masters Degrees



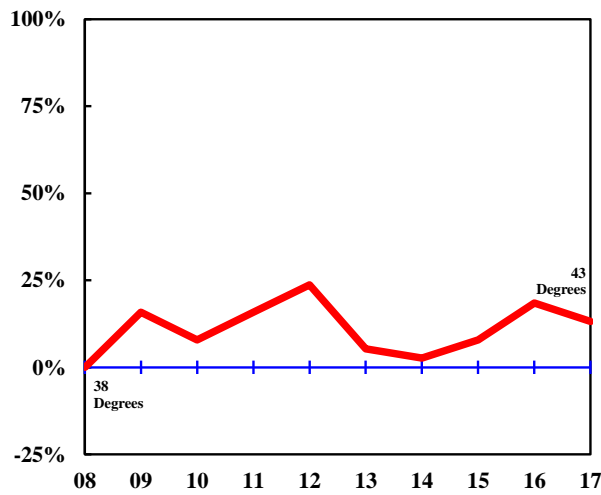
### Bachelor Degrees



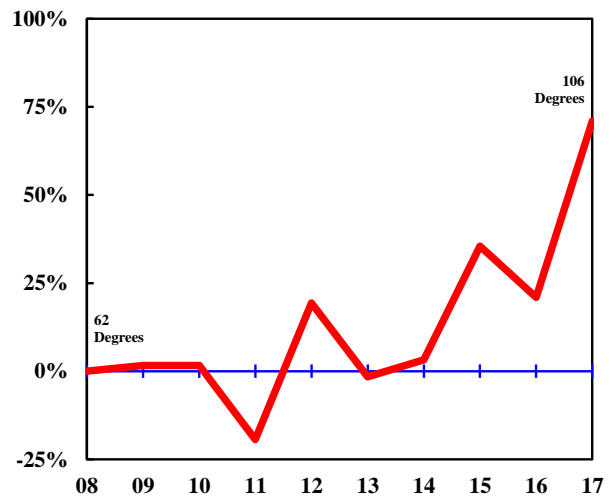
### Masters Degrees



### 1st Professional Degrees



### Doctoral Degrees



COLLEGE/DEGREE	FY 2008	FY 2009	FY 2010	FY 2011	FY 2012	FY 2013	FY 2014	FY 2015	FY 2016	FY 2017	3-Year	<u>Average</u> 5-Year	10-Year	Change in FY17 relative to the 10-Year Avg.
<b>AGRICULTURE, FOOD, AND NATURAL RESOURCES, COLLEGE OF</b>														
Bachelors	367	391	383	400	432	491	460	491	528	529	516.0	499.8	447.2	18%
Masters	46	51	38	45	51	44	68	38	63	47	49.3	52.0	49.1	-4%
Doctorate	26	32	28	27	24	34	35	33	28	40	33.7	34.0	30.7	30%
All	439	474	449	472	507	569	563	562	619	616	599.0	585.8	527.0	17%
<b>ARTS AND SCIENCE, COLLEGE OF</b>														
Bachelors	1,725	1,741	1,744	1,812	1,961	2,046	1,902	1,963	1,913	1,962	1,946.0	1,957.2	1,876.9	5%
Masters	158	176	144	176	169	168	209	197	182	179	186.0	187.0	175.8	2%
Doctorate	108	97	104	98	119	106	113	141	124	120	128.3	120.8	113.0	6%
All	1,991	2,014	1,992	2,086	2,249	2,320	2,224	2,301	2,219	2,261	2,260.3	2,265.0	2,165.7	4%
<b>BUSINESS, COLLEGE OF</b>														
Bachelors	807	779	900	838	824	786	785	776	829	939	848.0	823.0	826.3	14%
Grad. Certif.	30	9	15	27	23	21	24	25	19	38	27.3	25.4	23.1	65%
Masters	214	204	237	220	217	231	229	242	222	241	235.0	233.0	225.7	7%
Doctorate	6	6	4	6	10	8	8	5	11	6	7.3	7.6	7.0	-14%
All	1,057	998	1,156	1,091	1,074	1,046	1,046	1,048	1,081	1,224	1,117.7	1,089.0	1,082.1	13%
<b>EDUCATION, COLLEGE OF</b>														
Bachelors	249	246	239	246	274	284	305	280	307	227	271.3	280.6	265.7	-15%
Masters	450	485	502	495	532	464	418	464	457	480	467.0	456.6	474.7	1%
Ed. Specialist	34	57	59	53	43	63	65	82	51	56	63.0	63.4	56.3	-1%
Doctorate	87	87	74	84	79	117	73	83	74	102	86.3	89.8	86.0	19%
All	820	875	874	878	928	928	861	909	889	865	887.7	890.4	882.7	-2%
<b>ENGINEERING, COLLEGE OF</b>														
Bachelors	368	386	398	422	518	472	490	596	693	629	639.3	576.0	497.2	27%
Masters	93	90	78	109	100	120	131	165	136	157	152.7	141.8	117.9	33%
Doctorate	36	24	24	44	32	32	43	37	36	46	39.7	38.8	35.4	30%
All	497	500	500	575	650	624	664	798	865	832	831.7	756.6	650.5	28%
<b>HEALTH PROFESSIONS, SCHOOL OF</b>														
Bachelors	153	155	176	242	345	426	549	600	702	730	677.3	601.4	407.8	79%
Masters	96	82	48	40	55	51	58	60	54	66	60.0	57.8	61.0	8%
Doctorate	0	0	36	43	38	45	43	44	45	58	49.0	47.0	35.2	65%
All	249	237	260	325	438	522	650	704	801	854	786.3	706.2	504.0	69%

COLLEGE/DEGREE	FY 2008	FY 2009	FY 2010	FY 2011	FY 2012	FY 2013	FY 2014	FY 2015	FY 2016	FY 2017	3-Year	<u>Average</u> 5-Year	10-Year	Change in FY17 relative to the 10-Year Avg.
Bachelors	278	298	274	275	279	309	318	269	282	336	295.7	302.8	291.8	15%
Masters	18	35	17	30	34	28	26	41	38	36	38.3	33.8	30.3	19%
Doctorate	5	9	8	12	7	9	11	20	12	13	15.0	13.0	0.60.6	23%
All	301	342	299	317	320	346	355	330	332	385	349.0	349.6	332.7	16%
Bachelors	475	520	521	510	534	504	520	483	549	545	525.7	520.2	516.1	6%
Masters	91	107	112	88	111	73	91							





COLLEGE/DEGREE	FY 2008	FY 2009	FY 2010	FY 2011	FY 2012	FY 2013	FY 2014	FY 2015	FY 2016	FY 2017	3-Year	<u>Average</u> 5-Year	10-Year	Change in FY17 relative to the 10-Year Avg.
U-Grad. Certif. Bachelors	713	829	931	813	934	877	895	844	766	872	827.3	850.8	847.4	

-



COLLEGE/DEGREE	FY 2008	FY	FY	FY	FY	FY	FY	FY	FY	FY	FY	<u>Average</u>	Change in FY17 relative to the
----------------	------------	----	----	----	----	----	----	----	----	----	----	----------------	-----------------------------------



COLLEGE/DEGREE	FY 2008	FY 2009	FY 2010	FY 2011	FY 2012	FY 2013	FY 2014	FY 2015	FY 2016	FY 2017	3-6	<u>Average</u>	Change in FY17 relative to the