

University of Missouri System
Undergraduate Financial Aid Summary Report
FY2008FY2012

Report Prepared by
Dr. La Shonda Carter-Boone
Senior Institutional Research Analyst

Office of Institutional Research and Planning
714 Lewis Hall
University of Missouri System

November 2012

IR&P 2012, Report 4

BooneL@umsystem.edu
573884-3104

- x Missouri nonresident undergraduate students in the lower income categories have the highest grant aid as a percentage of tuition and required fees (Table 1.2).
- x The volume of Parent Loans for Undergraduate Students (PLUS) loans increased from FY08 to FY12 for both nonresident students with and without financial need. In FY08, 543 parents borrowed an average \$14,395 to meet their child's education expenses. Five years later, 1,119 parents borrowed approximately \$17,281 to cover these expenses. Systemwide, the amount of PLUS loans distributed increased from \$7.8 million in FY08 to \$19.3 million in FY12 (Table 1.4).
- x Students with incomes less than \$40,000 tend to have the highest amount of financial need and receive larger total financial aid awards than higher income students. However, lower income students continue to have the largest amount of unmet financial need (Figure 1.4).
- x The unmet financial need of nonresident students increased in all income levels over the past five years (Figure 1.5).

The contextual basis of financial aid distribution

Roughly 30% of nonresident undergraduates attending the University of Missouri pay the entire cost of attendance out of pocket. The majority of nonresident students receive some type of financial assistance to attend the University in the form of grants, scholarships, work study or loans. In addition, financial assistance comes from a wide variety of sources including the state and federal governments, profit and non-profit organizations, and the University (institutional gift aid). In addition, a significant amount of financial aid that is distributed is based on financial need (i.e. it is documented that the student's family cannot afford the entire cost of attendance). A student must complete a Free Application for Federal Student Aid (FAFSA) in order to determine the extent of financial need and the type and amount of aid based on need that can be awarded.

Many of the tables and figures throughout this report reference terms such as budgeted cost of attendance, financial need, grant aid, and unmet need. Assuming that a student has completed a FAFSA, Figure A.1 is provided to give an overview of how a student's financial aid package is determined.

\$23,455 Budgeted Cost of Attendance



Foremost, a BUDGETED COST OF ATTENDANCE (COA) is determined for every student that completes a FAFSA. The COA varies by student and is based on factors such as residency status, load status (full or part), and living arrangements (on or

Section I

Systemwide Financial Aid Trends of Full-Time, Degree-Seeking Non-Resident Undergraduates from FY08 to FY12

PLEASE NOTE: The findings below highlight systemwide trends at the University of Missouri.

1. How many non-resident students received aid and what type of aid was received?

The total number of full-time, degree-seeking non-resident undergraduates steadily increased over the past five years from 4,525 to 6,855, an increase of over 50%. With this increase in enrollment, there has been a 79.3% increase in the number with financial need from 1,495 in FY08 to 2,680 in FY12 (Figure 1.1).

2. Has grant aid kept pace with increases in tuition and required fees?

Over the past five years tuition and required fees increased 77% and the budgeted cost of attendance increased 107% while average grant aid decreased 10.6%. The overall trend is that there is an increasing gap between tuition and required fees and the average grant aid awarded to non-resident undergraduates (Figure 1.2).

3. How has the distribution of institutional gift aid changed over the past five years?

Both the number of non-residents receiving an average institutional grant award have increased. In addition, there has been a dramatic shift in the type of institutional gift aid awarded to students with need. In FY08 nearly 54% of all institutional grant aid awarded to students with need was awarded based on merit and 31% was based on need. By FY12 only 27% of all institutional grant aid awarded to students with need was based on need and 65% was based on merit (Table 1.1).

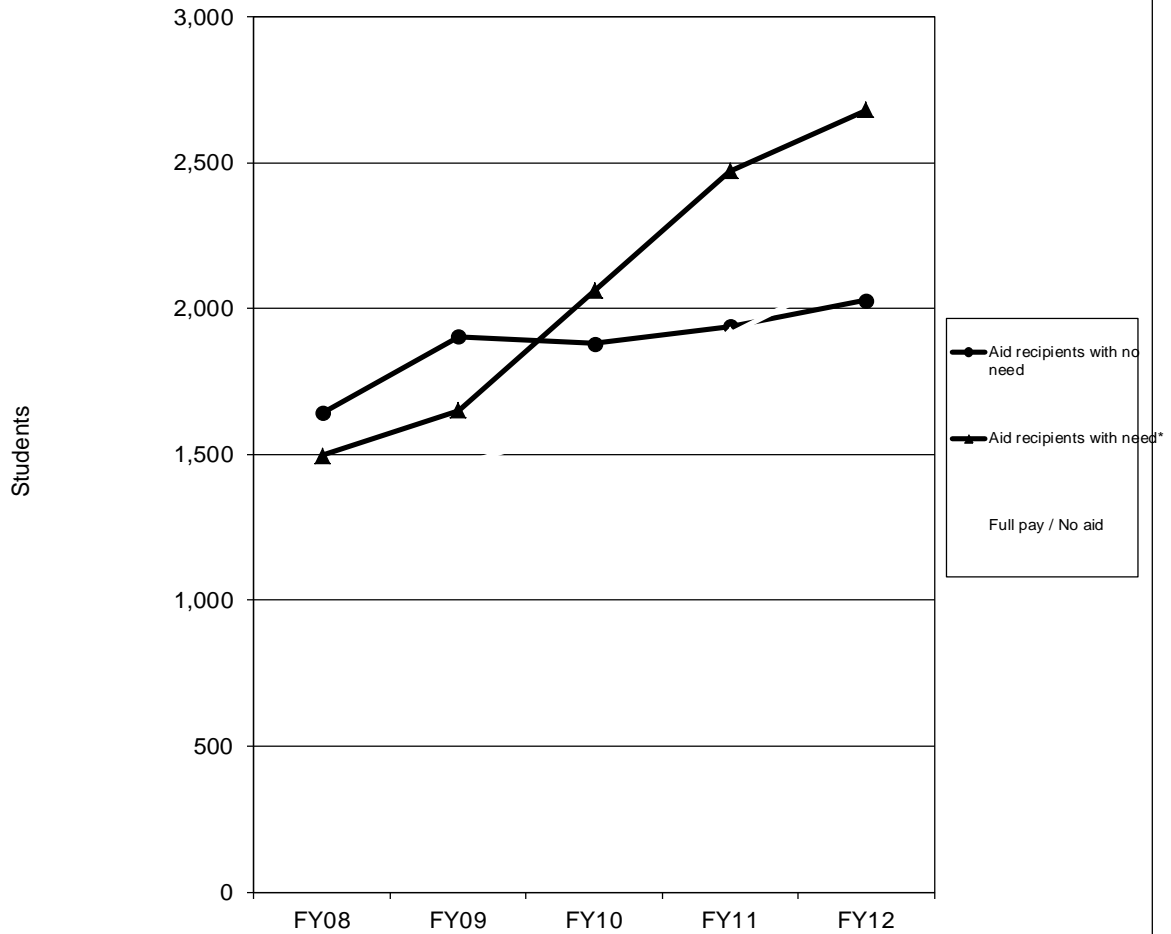
4. How has the distribution of PLUS loans changed over the past five years?

The volume of Parent Loans for Undergraduate Students (PLUS) loans increased from FY08 to FY12 for both students with and without financial need. In FY08 548 parents borrowed on average \$1,395 to meet their child's education expenses. Four years later, nearly 1,120 parents borrowed approximately \$1,281 to cover these expenses (Table 1.4).

5. What percent of tuition and required fees is met by grant aid?

Lower income non-residents have the most financial need and on average receive much more grant aid than higher income students. In FY08, grant aid covered nearly 52% of tuition and required fees for students with income less than \$20,000 and 43% for students with income between \$20,000 and \$40,000. By FY12, grant aid covered 45% of tuition

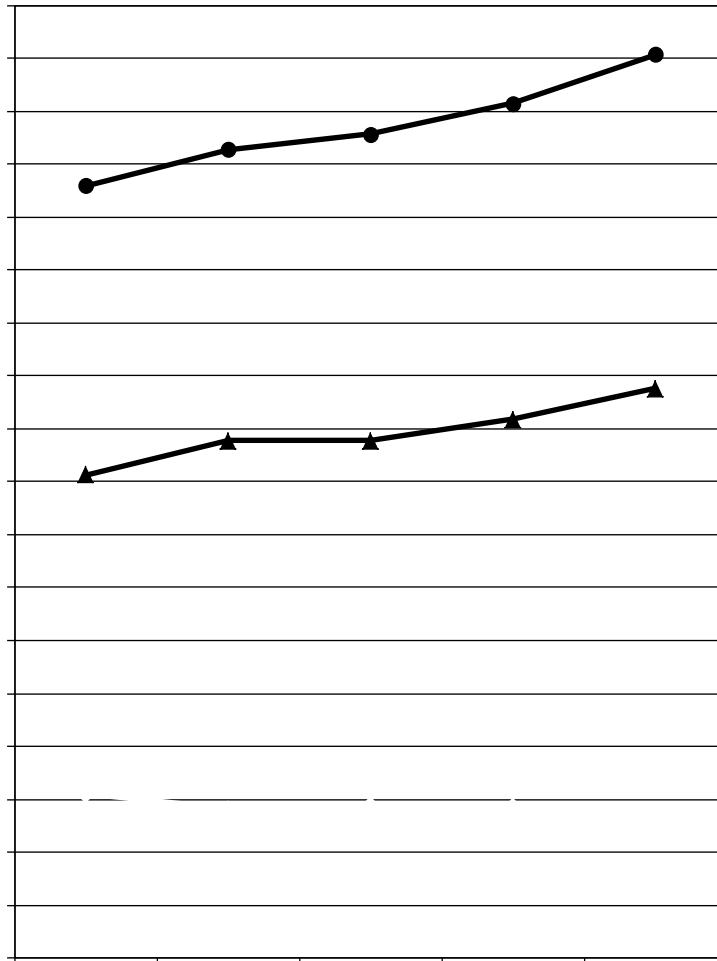
Figure 1.1
 Financial Aid Status for Full-time, Degree-Seeking Non-Resident Undergraduates at the University of Missouri System, FY08 - FY12



| | FY08 | FY09 | FY10 | FY11 | FY12 | 5-yr # Change | 5-yr % Change |
|--|--------------|--------------|--------------|--------------|--------------|---------------|---------------|
| Completed FAFSA, did not have a need | 664 | 857 | 885 | 931 | 1,009 | 345 | 52.0% |
| Grant aid, no FAFSA | <u>978</u> | <u>1,046</u> | <u>995</u> | <u>1,008</u> | <u>1,019</u> | <u>41</u> | 4.2% |
| Aid recipients with no need | 1,642 | 1,903 | 1,880 | 1,939 | 2,028 | 386 | 23.5% |
| Aid recipients with need* | 1,495 | 1,650 | 2,061 | 2,470 | 2,680 | 1,185 | 79.3% |
| Full pay / No aid | 1,388 | 1,461 | 1,604 | 1,910 | 2,147 | 759 | 54.7% |
| Total of all full-time, Degree-Seeking Non-Res | <u>4,625</u> | <u>5,014</u> | <u>5,545</u> | <u>6,319</u> | <u>6,855</u> | <u>2,330</u> | 51.5% |

* All aid recipients with need completed a FAFSA and were not expected to pay the entire cost of attendance.
 Note: Undergraduate Pharmacy and Medical students have been removed from this analysis.

Source: UIDS, EMSAS, and PeopleSoft
 IR&P/LCB 11/12



| | FY08 | FY09 | FY10 | FY11 | FY12 | 5-yr # Change | 5-yr % Change |
|-----------------------------|----------|----------|----------|----------|----------|------------------|------------------|
| Budgeted Cost of Attendance | \$29,189 | \$30,564 | \$31,152 | \$32,298 | \$34,153 | \$4,963 | 17.0% |
| Tuition & Required Fees | \$18,275 | \$19,547 | \$19,555 | \$20,368 | \$21,517 | \$3,241 | 17.7% |
| Average Grant Aid | \$6,190 | \$5,643 | \$5,786 | \$5,735 | \$5,536 | -\$654 | -10.6% |

Note: Undergraduate Pharmacy and Medical students have been removed from this analysis.

Source: UIDS, IPEDS Institutional Characteristics, PeopleSoft

IR&P/LCB 11/12

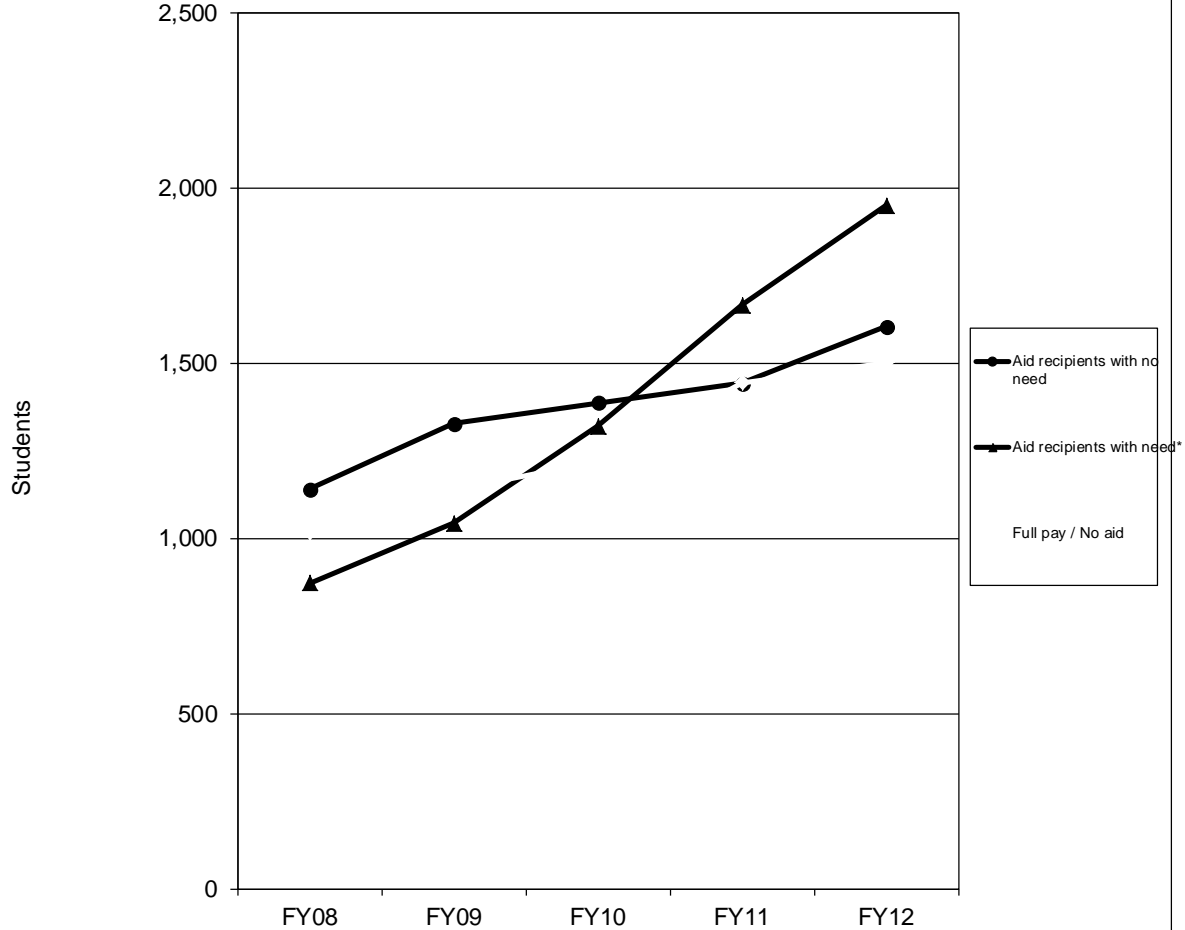
▼ ▼ ▼ ▼
▼ ▼ ▼ ▼
▼ ▼ ▼ ▼
▼ ▼ ▼ ▼

Section II

Campus-Level Financial Aid Trends of Full-Time, Degree Seeking
Non-Resident Undergraduates from FY08 to FY12

UM-Columbia (Table and Figure 2 series)- 5f >>BDC -0.002 Tc 0.002 T-1. P <<]c FY0-

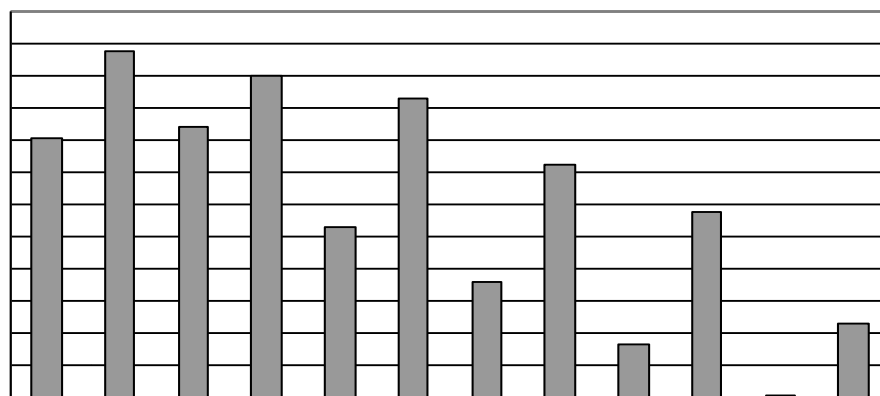
Figure 2.1
 Financial Aid Status for Full-time, Degree-Seeking Non-Resident Undergraduates
 at the University of Missouri-Columbia, FY08 - FY12



| | FY08 | FY09 | FY10 | FY11 | FY12 | 5-yr # Change | 5-yr % Change |
|--|--------------|--------------|--------------|--------------|--------------|---------------|---------------|
| Completed FAFSA, did not have a need | 504 | 645 | 733 | 768 | 885 | 381 | 75.6% |
| Grant aid, no FAFSA | <u>638</u> | <u>684</u> | <u>655</u> | <u>676</u> | <u>720</u> | <u>82</u> | 12.9% |
| Aid recipients with no need | 1,142 | 1,329 | 1,388 | 1,444 | 1,605 | 463 | 40.5% |
| Aid recipients with need* | 873 | 1,045 | 1,322 | 1,667 | 1,952 | 1,079 | 123.6% |
| Full pay / No aid | <u>1,018</u> | <u>1,140</u> | <u>1,222</u> | <u>1,446</u> | <u>1,504</u> | <u>486</u> | 47.7% |
| Total of all full-time, Degree-Seeking Non-Res | <u>3,633</u> | <u>3,514</u> | <u>3,932</u> | <u>4,557</u> | <u>5,061</u> | <u>2,028</u> | 66.9% |

* All aid recipients with need completed a FAFSA and were not expected to pay the entire cost of attendance.

Source: UIDS, EMSAS, and PeopleSoft
 IR&P/LCB 11/12

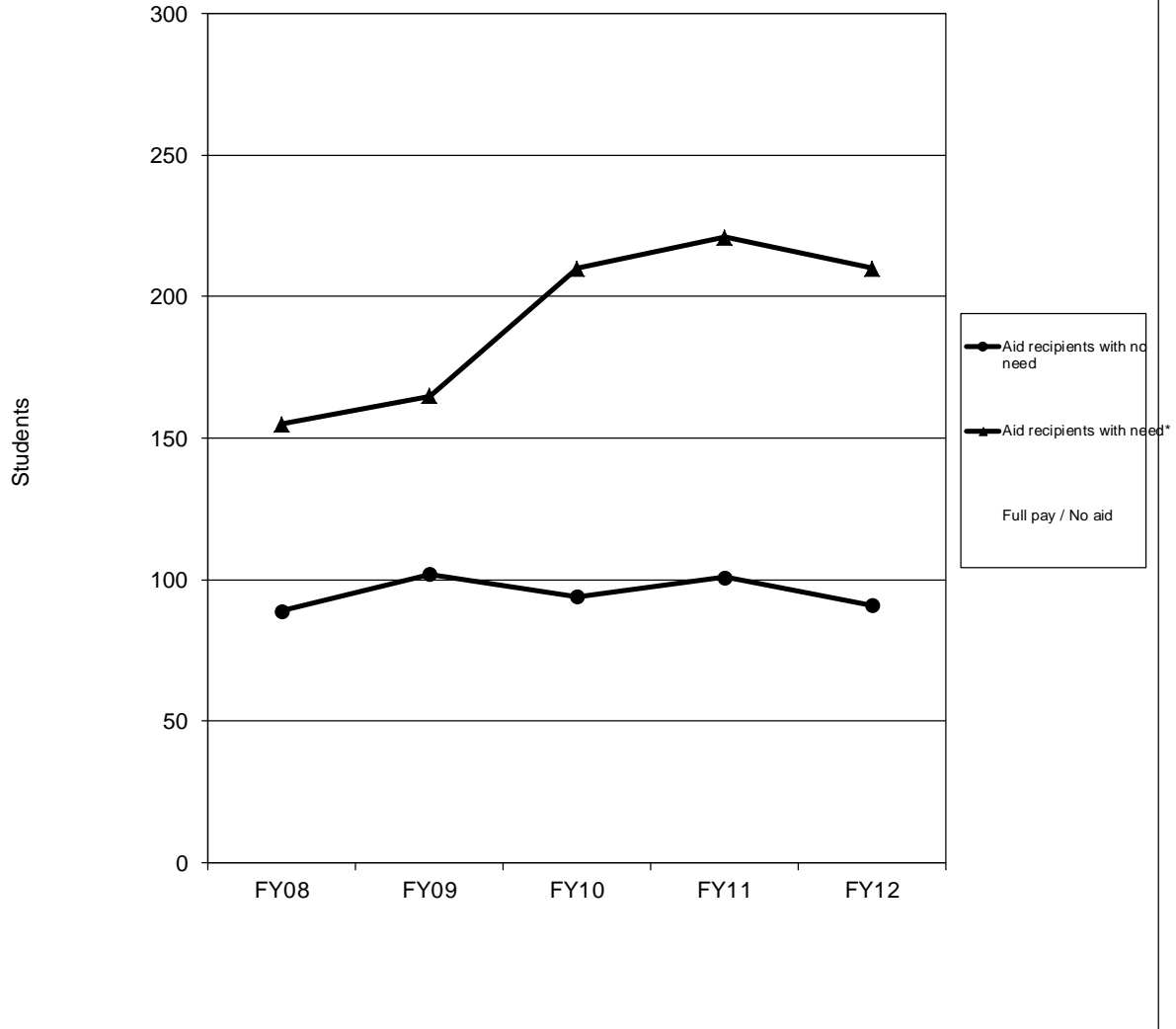


Source: UIDS, PeopleSoft
 IR&P/LCB 11/12

Table 2.5

| FY08 | FY09 | FY10 | FY11 | FY12 | FY08 | FY09 | FY10 | FY11 | FY12 | # Change FY08-FY12 | % Change FY08-FY12 |
|------|------|------|------|------|------|------|------|------|------|-----------------------|-----------------------|
|------|------|------|------|------|------|------|------|------|------|-----------------------|-----------------------|

Figure 3.1
 Financial Aid Status for Full-time, Degree-Seeking Non-Resident Undergraduates
 at the University of Missouri - Kansas City, FY08 - FY12

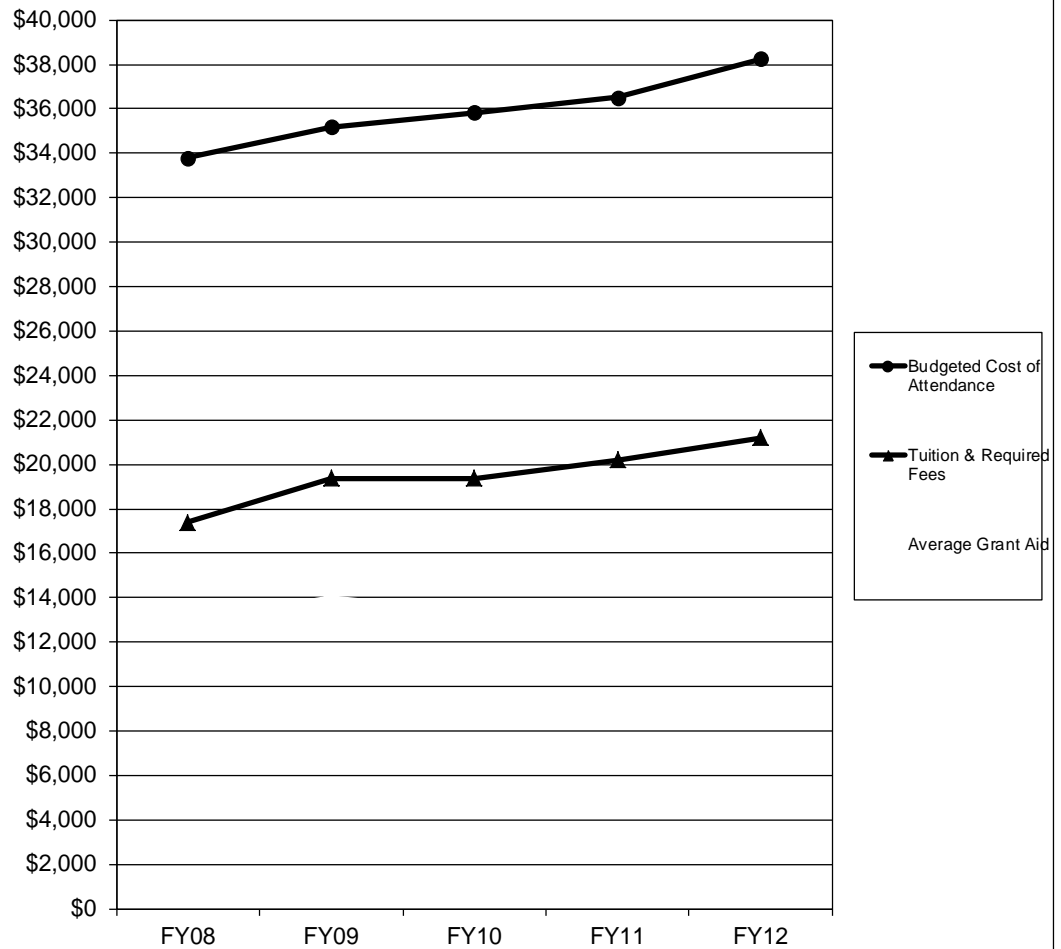


| | FY08 | FY09 | FY10 | FY11 | FY12 | 5-yr # Change | 5-yr % Change |
|---|------------|------------|------------|------------|------------|------------------|------------------|
| Completed FAFSA, did not have a need | 33 | 32 | 18 | 24 | 23 | -10 | -30.3% |
| Grant aid, no FAFSA | 56 | 70 | 76 | 77 | 68 | 12 | 21.4% |
| Aid recipients with no need | 89 | 102 | 94 | 101 | 91 | 2 | 2.2% |
| Aid recipients with need* | 155 | 165 | 210 | 221 | 210 | 55 | 35.5% |
| Full pay / No aid | 20 | 18 | 23 | 25 | 26 | 6 | 30.0% |
| Total of all full-time, Degree-Seeking Non-Res | 264 | 285 | 327 | 347 | 327 | 63 | 23.9% |

* All aid recipients with need completed a FAFSA and were not expected to pay the entire cost of attendance.
 Note: Undergraduate Pharmacy and Medical students have been removed from this analysis.

Source: UIDS, EMSAS, and PeopleSoft
 IR&P/LCB 11/12

Figure 3.2
 Tuition and Required Fees vs. 9 -Month Cost of Attendance and Grant Aid for
 Full-time Undergraduate Non -Residents at the
 University of Missouri -Kansas City, FY08 - FY12



| | FY08 | FY09 | FY10 | FY11 | FY12 | 5-yr # Change | 5-yr % Change |
|-----------------------------|----------|----------|----------|----------|----------|------------------|------------------|
| Budgeted Cost of Attendance | \$33,806 | \$35,185 | \$35,824 | \$36,524 | \$38,245 | \$4,439 | 13.1% |
| Tuition & Required Fees | \$17,396 | \$19,364 | \$19,364 | \$20,191 | \$21,197 | \$3,801 | 21.8% |
| Average Grant Aid | \$12,924 | \$14,002 | \$13,360 | \$13,530 | \$13,413 | \$489 | 3.8% |

Note: Undergraduate Pharmacy and Medical students have been removed from this analysis.

Source: UIDS, IPEDS Institutional Characteristics, PeopleSoft
 IR&P/LCB 11/12

Table 3.1

| Students with Need | # of Awards | Average Award | # of Awards | Average Award | FY10 | | FY11 | | FY12 | |
|-----------------------|-------------|---------------|-------------|---------------|-------------|---------------|-------------|---------------|-------------|---------------|
| | | | | | # of Awards | Average Award | # of Awards | Average Award | # of Awards | Average Award |
| Type of Award | | | | | | | | | | |
| Need* | 44 | \$1,830 | 26 | \$2,042 | 4 | \$1,438 | 6 | \$1,567 | 8 | \$1,328 |
| Merit | 52 | \$2,390 | 118 | \$12,216 | 147 | \$11,877 | 152 | \$12,364 | 155 | \$11,989 |
| Other** | 119 | \$12,706 | 29 | \$17,570 | 35 | \$14,943 | 33 | \$15,970 | 33 | \$13,526 |
| Total | 215 | \$7,985 | 173 | \$11,584 | 186 | \$12,229 | 191 | \$12,648 | 196 | \$11,813 |
| | | | | | | | | | | |
| Students without Need | # of Awards | Average Award | # of Awards | Average Award | FY10 | | FY11 | | FY12 | |
| | | | | | # of Awards | Average Award | # of Awards | Average Award | # of Awards | Average Award |
| Type of Award | | | | | | | | | | |
| Merit | 37 | \$2,677 | 67 | \$13,700 | 61 | \$13,646 | 66 | \$13,765 | 60 | \$13,551 |
| Other** | 82 | \$14,268 | 40 | \$17,186 | 38 | \$15,034 | 40 | \$19,525 | 39 | \$20,317 |
| Total | 119 | \$10,664 | 107 | \$15,003 | 99 | \$14,179 | 106 | \$15,939 | 99 | \$16,216 |

*Institutional grant aid awarded to students with need includes both need and merit-based aid.

**Includes athletic aid and tuition waivers.

Source: UIDS, PeopleSoft

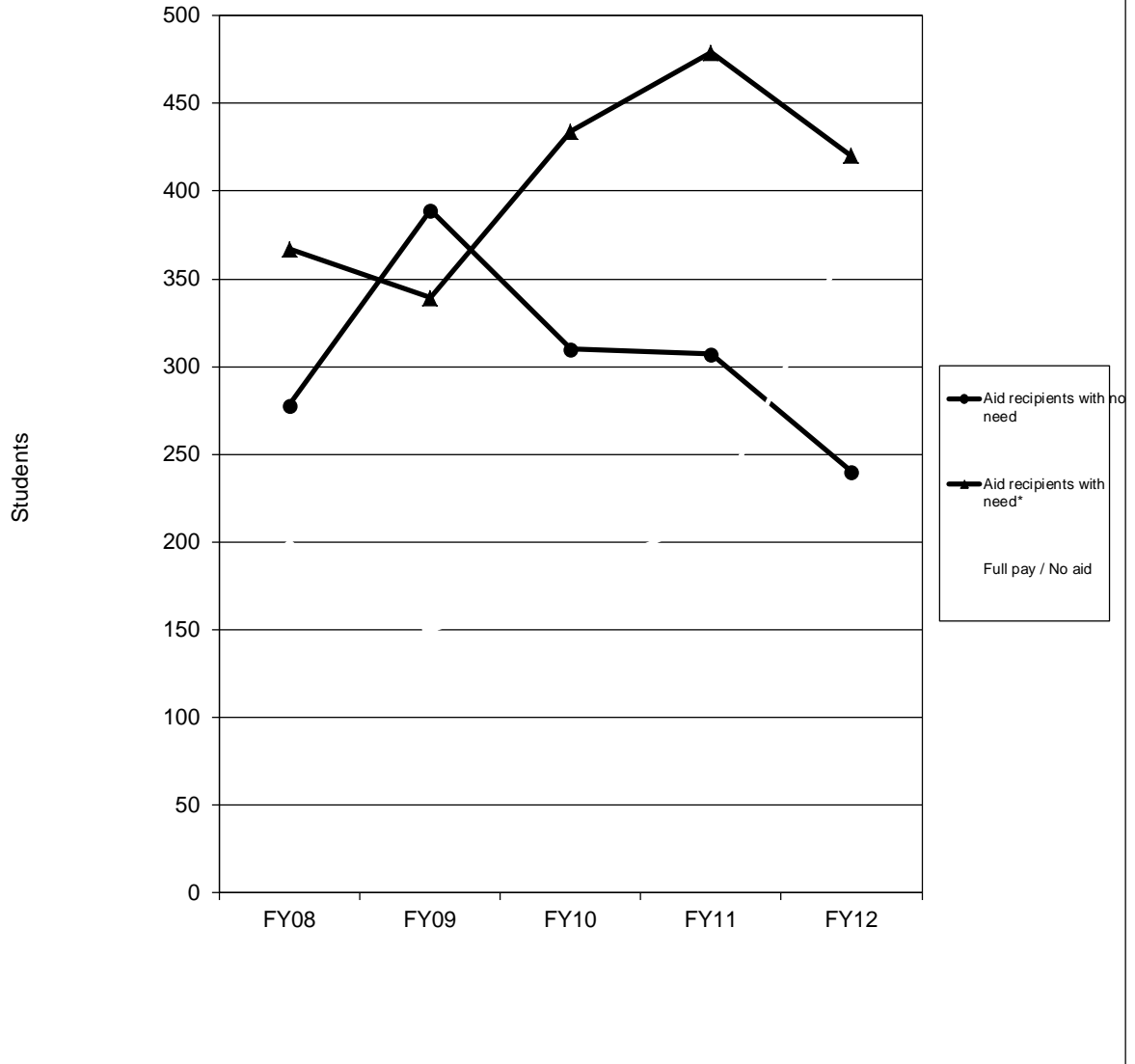
IR&PLCB 11/12

Source: UIDS, PeopleSoft
IR&P/LCB 11/R

Table 3.5 (Continued)

| | FY08 | FY09 | FY10 | FY11 | FY12 | FY08 | FY09 | FY10 | FY11 | FY12 | # Change FY08-FY12 | % Change FY08-FY12 |
|-------------------------------------|---------------|---------------|---------------|---------------|---------------|------|------|------|------|------|-----------------------|-----------------------|
| Total Enrolled for 9 months (N) | 17 | 11 | 20 | 21 | 20 | | | | | | 3 | 18% |
| Cost of Attendance | \$34,134 | \$33,897 | \$35,852 | \$37,486 | \$38,153 | | | | | | \$4,019 | 12% |
| Less Expected Family Contribution* | <u>13,983</u> | <u>13,225</u> | <u>10,813</u> | <u>10,247</u> | <u>12,891</u> | 41% | 39% | 30% | 27% | 34% | -1,092 | -8% |
| Financial Need | 20,151 | 20,672 | 25,039 | 27,239 | 25,262 | 59% | 61% | 70% | 73% | 66% | 5,111 | 25% |
| Less Grant Aid | 13,625 | 12,496 | 10,371 | 10,641 | 10,818 | 40% | 37% | 29% | 28% | 28% | -2,807 | -21% |
| Unmet Need | \$6,526 | \$8,176 | \$14,668 | \$16,598 | \$14,444 | 19% | 24% | 41% | 44% | 38% | 7,918 | 121% |
| % Grant Aid that Met Financial Need | 68% | 60% | 41% | 39% | 43% | | | | | | | |

Figure 4.1
 Financial Aid Status for Full-time, Degree-Seeking Non-Resident Undergraduates at Missouri S&T, FY08 - FY12

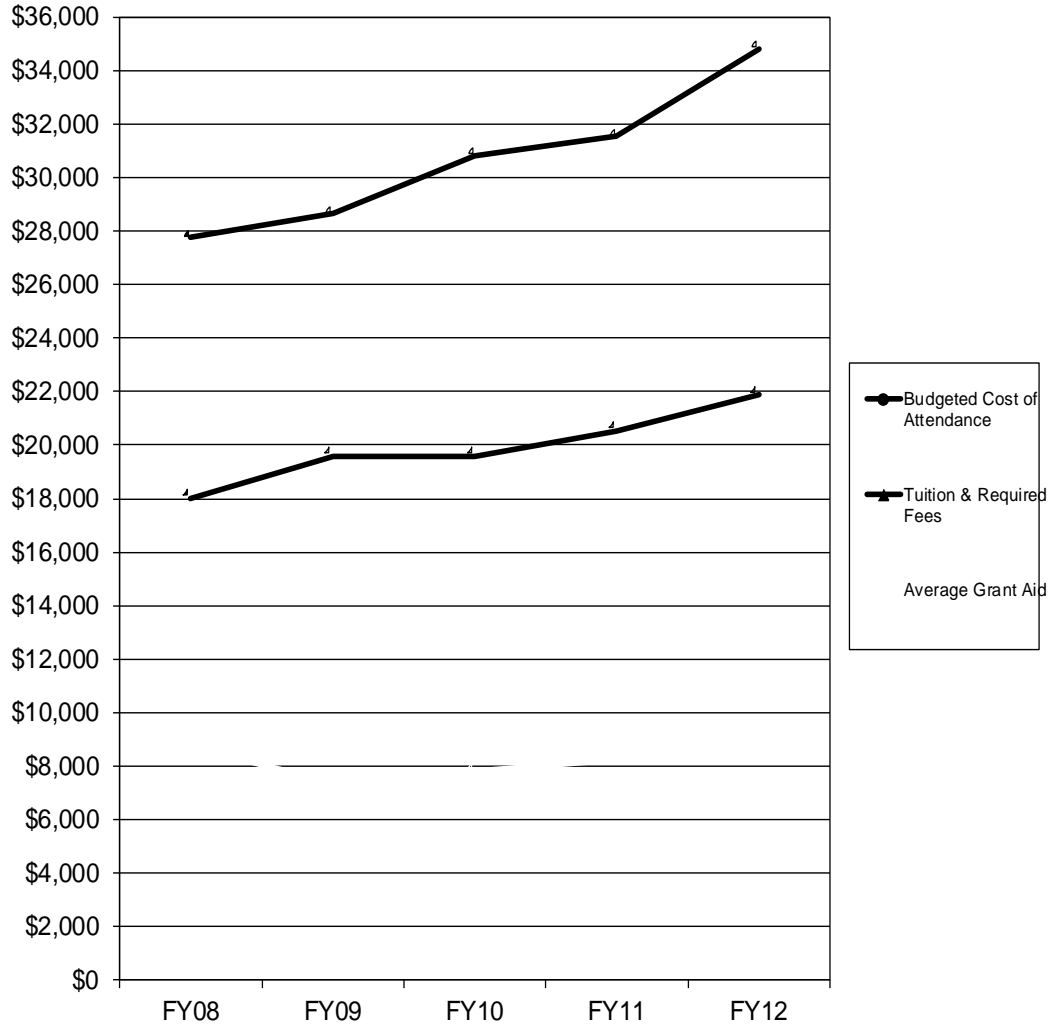


| | FY08 | FY09 | FY10 | FY11 | FY12 | 5-yr # Change | 5-yr % Change |
|--|------------|------------|------------|--------------|--------------|---------------|---------------|
| Completed FAFSA, did not have a need | 114 | 169 | 124 | 127 | 90 | -24 | -21.1% |
| Grant aid, no FAFSA | <u>164</u> | <u>220</u> | <u>186</u> | <u>180</u> | <u>150</u> | <u>-14</u> | <u>-8.5%</u> |
| Aid recipients with no need | 278 | 389 | 310 | 307 | 240 | -38 | -13.7% |
| Aid recipients with need* | 367 | 339 | 434 | 479 | 420 | 53 | 14.4% |
| Full pay / No aid | 198 | 150 | 178 | 215 | 375 | 177 | 89.4% |
| Total of all full-time, Degree-Seeking Non-Res | <u>643</u> | <u>878</u> | <u>922</u> | <u>1,001</u> | <u>1,035</u> | <u>192</u> | <u>22.8%</u> |

* All aid recipients with need completed a FAFSA and were not expected to pay the entire cost of attendance.

Source: UIDS, EMSAS, and PeopleSoft
 IR&P/LCB 11/12

Figure 4.2
 Tuition and Required Fees vs. 9 -Month Cost of Attendance and Grant Aid for
 Full-time Undergraduate Non -Residents at Missouri S&T, FY08 - FY12



| | FY08 | FY09 | FY10 | FY11 | FY12 | 5-yr # Change | 5-yr % Change |
|-----------------------------|----------|----------|----------|----------|----------|------------------|------------------|
| Budgeted Cost of Attendance | \$27,745 | \$28,640 | \$30,839 | \$31,547 | \$34,815 | \$7,070 | 25.5% |
| Tuition & Required Fees | \$18,030 | \$19,579 | \$19,579 | \$20,543 | \$21,879 | \$3,849 | 21.3% |
| Average Grant Aid | \$8,730 | \$7,402 | \$7,808 | \$8,232 | \$8,793 | \$63 | 0.7% |

Source: UIDS, IPEDS Institutional Characteristics, PeopleSoft
 IR&P/LCB 11/12

Table 4.3

Total Financial Aid as % of Cost of Attendance by Income Level at
Missouri S&T, FY08 & FY12

| Income Level | FY08 | | | | | FY12 | | | | |
|-----------------------|------------------------------|----------|------------|-------|-------------|------------------------------|----------|------------|-------|-------------|
| | % COA Met by Source of Aid | | | | % Unmet COA | % COA Met by Source of Aid | | | | % Unmet COA |
| | Expected Family Contribution | Gift Aid | Work Study | Loans | | Expected Family Contribution | Gift Aid | Work Study | Loans | |
| <\$20,000 | 4% | 36% | 2% | 26% | 32% | 1% | 31% | 1% | 32% | 35% |
| \$20,000 to \$40,00 | 15% | 31% | 0% | 21% | 33% | 4% | 30% | 1% | 27% | 38% |
| \$40,000 to \$60,000 | 22% | 30% | 0% | 31% | 17% | 12% | 32% | 0% | 23% | 33% |
| \$60,000 to \$80,000 | 44% | 32% | 0% | 16% | 8% | 27% | 23% | 0% | 21% | 29% |
| \$80,000 to \$100,000 | 59% | 34% | 0% | 9% | 0% | 40% | 24% | 0% | 16% | 21% |
| >\$100,000 | 72% | 31% | 0% | 5% | 0% | 61% | 23% | 0% | 8% | 8% |

Source: UIDS, PeopleSoft
IR&P/LCB 11/12

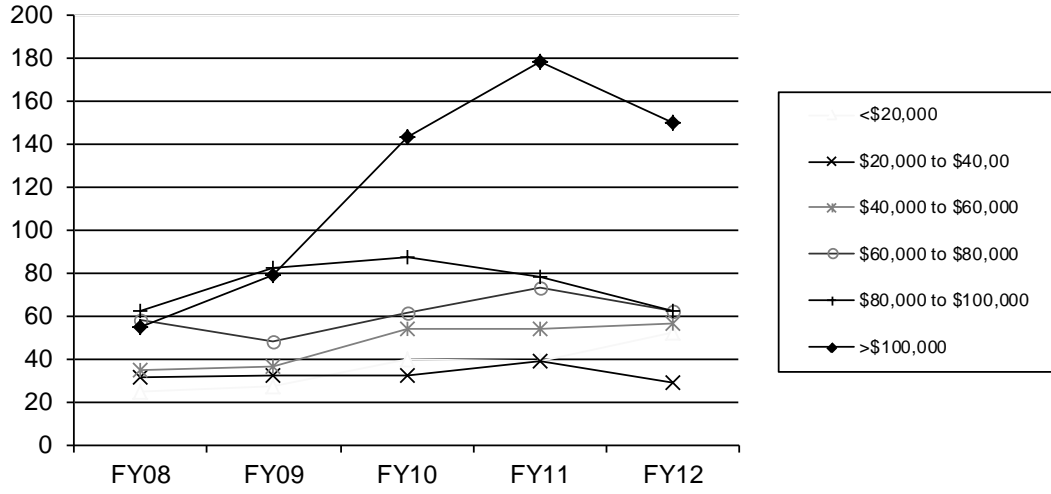
Table 4.4

Average PLUS Loan Awarded to PLUS Loan Recipients, Non-Resident, Full-time,
Degree-Seeking Undergraduates by Financial Need at
Missouri S&T, FY08 - FY12

| | FY08 | | FY09 | | FY10 | | FY11 | | FY12 | |
|--------------|------|----------|------|---------|------|----------|------|----------|------|----------|
| | N | Mean | N | Mean | N | Mean | N | Mean | N | Mean |
| With Need | 41 | \$11,703 | 39 | \$3,936 | 55 | \$12,622 | 114 | \$14,068 | 111 | \$16,058 |
| Without Need | 13 | 13,948 | 85 | 4,049 | 12 | 10,529 | 19 | 15,863 | 16 | 17,574 |
| | 54 | \$12,243 | 124 | \$4,013 | 67 | \$12,247 | 133 | \$14,324 | 127 | \$16,249 |

Source: UIDS, PeopleSoft
IR&P/LCB 11/12

Figure 4.3
 Number of Full -time, Degree -Seeking 9 -Month Undergraduate
 Non - Residents with Financial Need by Income Level at
 Missouri S&T, FY08 - FY12



Source: UIDS, PeopleSoft
 IR&P/LCB 11/12

Source: UIDS, PeopleSoft
IR&P/LCB 11/12

60%

Table 4.5

| | FY08 | FY09 | FY10 | FY11 | FY12 | FY08 | FY09 | FY010 | FY011 | FY012 | # Change FY08-FY12 | % Change FY08-FY12 |
|-------------------------------------|--------------|--------------|------------|------------|------------|------|------|-------|-------|-------|-----------------------|-----------------------|
| Total Enrolled for 9 months (N) | 25 | 27 | 40 | 39 | 52 | | | | | | 27 | 108% |
| Cost of Attendance | \$28,771 | \$29,098 | \$31,456 | \$31,128 | \$33,767 | | | | | | \$4,996 | 17% |
| Less Expected Family Contribution* | <u>1,120</u> | <u>1,110</u> | <u>679</u> | <u>296</u> | <u>251</u> | 4% | 4% | 2% | 1% | 1% | -869 | -78% |
| Financial Need | 27,651 | 27,988 | 30,777 | 30,832 | 33,516 | 96% | 96% | 98% | 99% | 99% | 5,865 | 21% |
| Less Grant Aid | 10,501 | 10,959 | 11,390 | 11,525 | 10,402 | 36% | 38% | 36% | 37% | 31% | -99 | -1% |
| Unmet Need | \$17,150 | \$17,029 | \$19,387 | \$19,307 | \$23,114 | 60% | 59% | 62% | 62% | 68% | 5,964 | 35% |
| % Grant Aid that Met Financial Need | 38% | 39% | 37% | 37% | 31% | | | | | | | |

Non-Grant Sources to Meet

Remaining Unmet Financial Need

Colleg19 g19 g19 g19 g19 g197(eg19-54(t)306TJ 0k3(i)-2c76-54(e)-54(t)30()21yTJ ET Q q 0.483918.923 0 Td t*/TT 525.667 113.738 \$812 525.667 113.738 \$11879

Table 4.5 (Continued)

| | FY08 | FY09 | FY10 | FY11 | FY12 | FY08 | FY09 | FY10 | FY11 | FY12 | # Change | % Change |
|------------------------------------|----------|----------|----------|----------|----------|------|------|------|------|------|-----------|-----------|
| | | | | | | FY08 | FY09 | FY10 | FY11 | FY12 | FY08-FY12 | FY08-FY12 |
| Total Enrolled for 9 months (N) | 58 | 48 | 61 | 73 | 62 | | | | | | 4 | 7% |
| Cost of Attendance | \$27,554 | \$28,824 | \$31,268 | \$31,951 | \$34,812 | | | | | | \$7,258 | 26% |
| Less Expected Family Contributions | 12,155 | 11,696 | 11,040 | 9,572 | 9,589 | 14% | 18% | 25% | 20% | 27% | 2,586 | 21% |
| Financial Need | 15,399 | 17,218 | 20,228 | 22,379 | 25,243 | 56% | 60% | 65% | 70% | 73% | 9,844 | 64% |
| Less Grant Aid | 8,799 | 6,401 | 7,603 | 7,844 | 8,126 | 32% | 22% | 24% | 25% | 23% | -673 | -8% |
| Unmet Need | \$6,600 | \$10,817 | \$12,625 | \$14,535 | \$17,117 | 24% | 38% | 40% | 45% | 49% | 10,517 | 159% |

% Grant A517

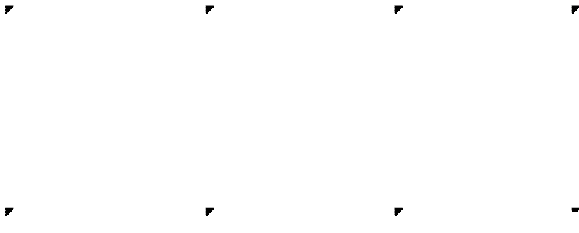


Table 5.3

Total Financial Aid as % of Cost of Attendance by Income Level at the University of Missouri-St. Louis, FY08 & FY12

| Income Level | FY08 | | | | | FY12 | | | | |
|-----------------------|------------------------------|----------|------------|-------|-------------|------------------------------|----------|------------|-------|-------------|
| | % COA Met by Source of Aid | | | | % Unmet COA | % COA Met by Source of Aid | | | | % Unmet COA |
| | Expected Family Contribution | Gift Aid | Work Study | Loans | | Expected Family Contribution | Gift Aid | Work Study | Loans | |
| <\$20,000 | 1% | 19% | 0% | 18% | 62% | 1% | 12% | 0% | 26% | 61% |
| \$20,000 to \$40,00 | 13% | 14% | 0% | 15% | 58% | 1% | 22% | 0% | 14% | 63% |
| \$40,000 to \$60,000 | 12% | 14% | 0% | 15% | 59% | 6% | 16% | 0% | 17% | 61% |
| \$60,000 to \$80,000 | 36% | 18% | 0% | 18% | 28% | 29% | 15% | 0% | 9% | 47% |
| \$80,000 to \$100,000 | 34% | 18% | 0% | 16% | 32% | 39% | 19% | 0% | 7% | 35% |
| >\$100,000 | 54% | 16% | 0% | 9% | 21% | 60% | 18% | 0% | 3% | 19% |

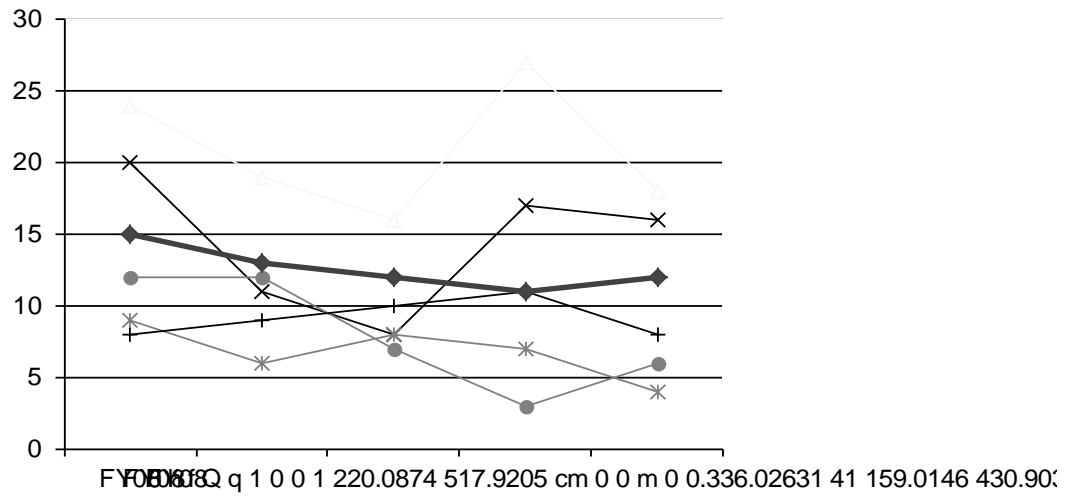
Source: UIDS, PeopleSoft
IR&P/LCB 11/12

Table 5.4

| | N | Mean | N | Mean | N | Mean | N | Mean | N | Mean |
|--------------|----|----------|----|----------|----|----------|----|----------|----|----------|
| With Need | 16 | \$10,656 | 14 | \$11,530 | 15 | \$13,941 | 17 | \$13,076 | 18 | \$12,152 |
| Without Need | 3 | 14,803 | 2 | 10,476 | 3 | 15,419 | 3 | 13,824 | 3 | 15,196 |
| | 19 | \$11,311 | 16 | \$11,399 | 18 | \$14,187 | 20 | \$13,188 | 21 | \$12,587 |

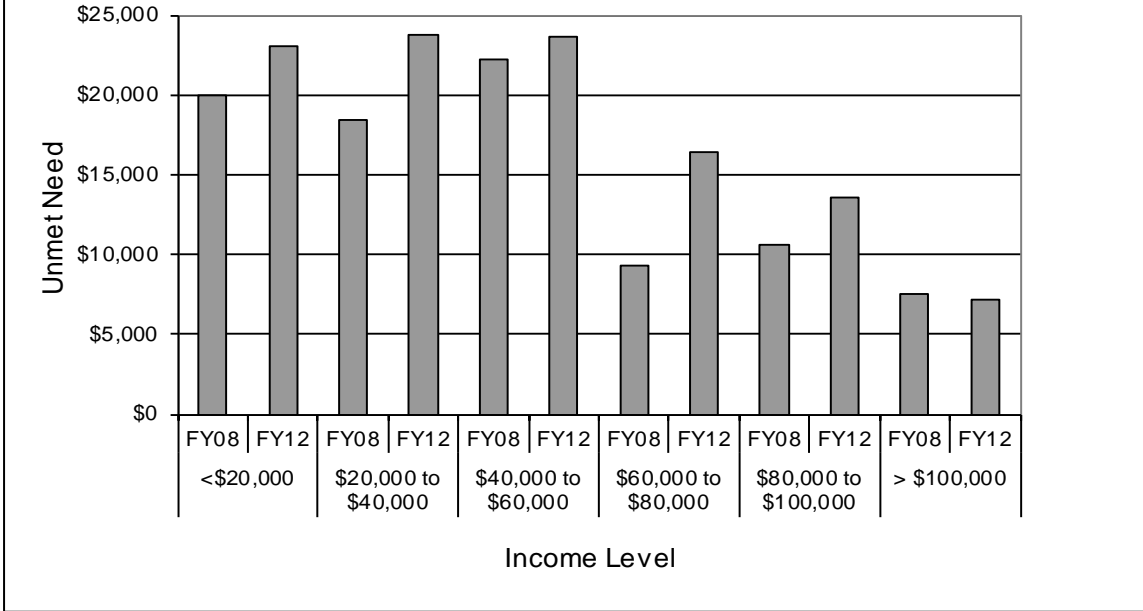
Source: UIDS, PeopleSoft

IR31d [(2)1(1)]TJ 3.846 0 Td [(\$)1(12)1(,)3(5)1(87)]TJ /587



Source: UIDS, PeopleSoft
IR&P/LCB 11/12

Figure 5.5
 Average Amount of Unmet Financial Need by Income Level at
 the UM-St. Louis, FY08 vs. FY12



Source: UIDS, PeopleSoft
 IR&P/LCB 11/12

Table 5.5

| | FY08 | FY09 | FY10 | FY11 | FY12 | FY08 | FY09 | FY10 | FY11 | FY12 | # Change FY08-FY12 | % Change FY08-FY12 |
|---|------------|------------|------------|------------|------------|------|------|------|------|------|-----------------------|-----------------------|
| Total Enrolled for 9 months (N) | 24 | 19 | 16 | 27 | 18 | | | | | | -6 | -25% |
| Cost of Attendance | \$32,239 | \$34,073 | \$33,668 | \$36,372 | \$38,191 | | | | | | \$5,952 | 18% |
| Less Expected Family Contribution* | <u>266</u> | <u>617</u> | <u>127</u> | <u>244</u> | <u>231</u> | 1% | 2% | 0% | 1% | 1% | -35 | -13% |
| Financial Need | 31,973 | 33,456 | 33,541 | 36,128 | 37,960 | 99% | 98% | 100% | 99% | 99% | 5,987 | 19% |
| Less Grant Aid | 6,220 | 5,322 | 5,336 | 5,982 | 4,703 | 19% | 16% | 16% | 16% | 12% | -1,517 | -24% |
| Unmet Need | \$25,753 | \$28,134 | \$28,205 | \$30,146 | \$33,257 | 80% | 83% | 84% | 83% | 87% | 7,504 | 29% |
| % Grant Aid that Met Financial Need | 19% | 16% | 16% | 17% | 12% | | | | | | | |
| Non-Grant Sources to Meet Remaining Unmet Financial Need | | | | | | | | | | | | |
| College Work Study | \$0 | \$380 | \$0 | \$0 | \$135 | 0% | 1% | 0% | 0% | 0% | \$515 | 100% |

