

**ENROLLMENT SUMMARY REPORT
FALL 2007**

Dr. La Shonda Carter-Boone
Senior Institutional Research Analyst

Office of Institutional Research & Planning
722 Lewis Hall
University of Missouri System

March 2008

IR&P 2008, Report 1

<http://www.umsystem.edu/ums/departments/fa/planning/>

FALL 2007 ENROLLMENT SUMMARY

Technical Notes

These tables provide counts of students enrolled in the fall of 2007 on-schedule credit courses at the four campuses of the University of Missouri. Five and ten-year trend data are included in the tables for comparison purposes. The data used in this report were generated from the EMSAS Fall Enrollment files, which are submitted to the Missouri Department of Higher Education (MDHE) each fall. Data included in EMSAS files were prepared in the admissions and registration offices at the respective campuses. The data are counts as of the census date at each campus, which is defined as the end of the fourth week of classes for the fall session. The source data are based on the reporting guidelines and definitions of the Missouri Department of Higher Education (MDHE) and the National Center for Educational Statistics (NCES).

Tables in the Table 2 series (2.0-2.4) include counts of on- and off-campus students. The columns titled "On-Campus", according to the MDHE guidelines, include students enrolled geographically on campus and students in the Graduate Engineering (Residence) Centers. All other students are counted in the columns headed "Off-Campus", which include students enrolled in extension courses and students that receive H.S. advanced credit from the Kansas City and St. Louis campuses. The tables of the Table 2 series also include full-time equivalence (FTE) counts.

Tables in the Table 4 series (4.0a-4.4b) include counts of resident and non-resident students by level and course load (full-time vs. part-time).

Definitions of FTE:

Undergraduate FTE = Total Student Credit Hours/15

Graduate FTE = Total Student Credit Hours/12

Dentistry FTE = Headcount

Law FTE = Total Student Credit Hours/15

UMC Medicine FTE = Headcount

UMKC Medicine FTE = Headcount

Optometry FTE = Headcount

Pharmacy FTE = Headcount

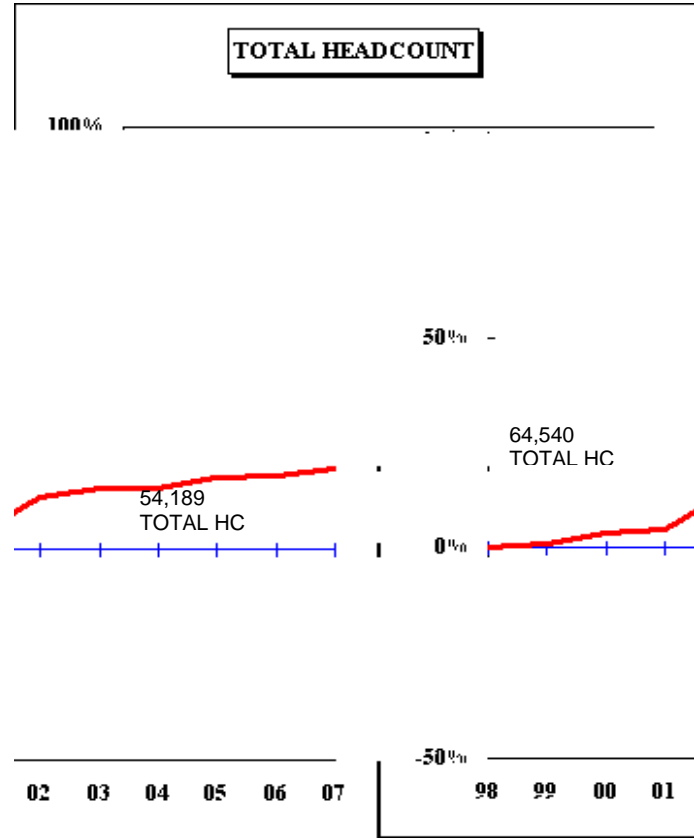
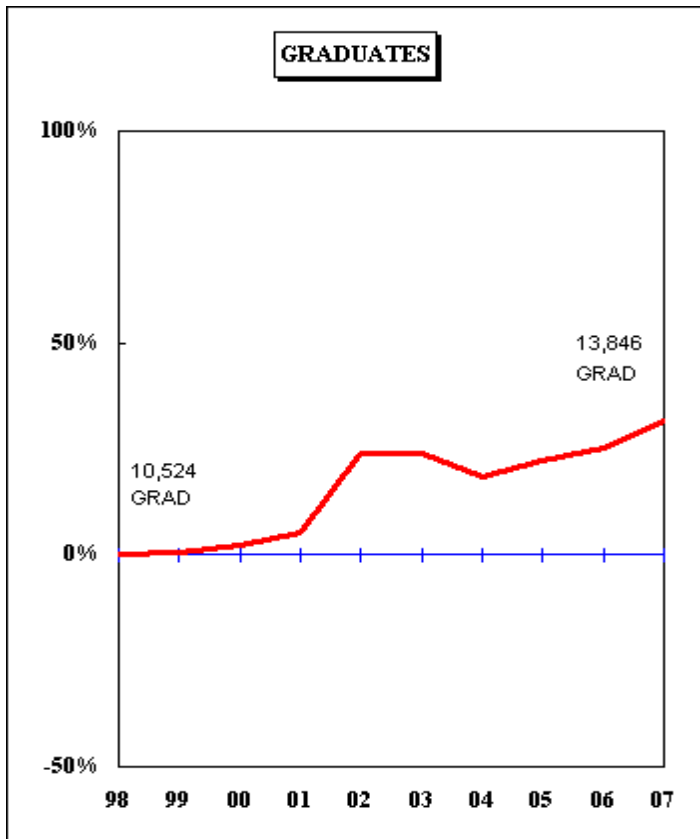
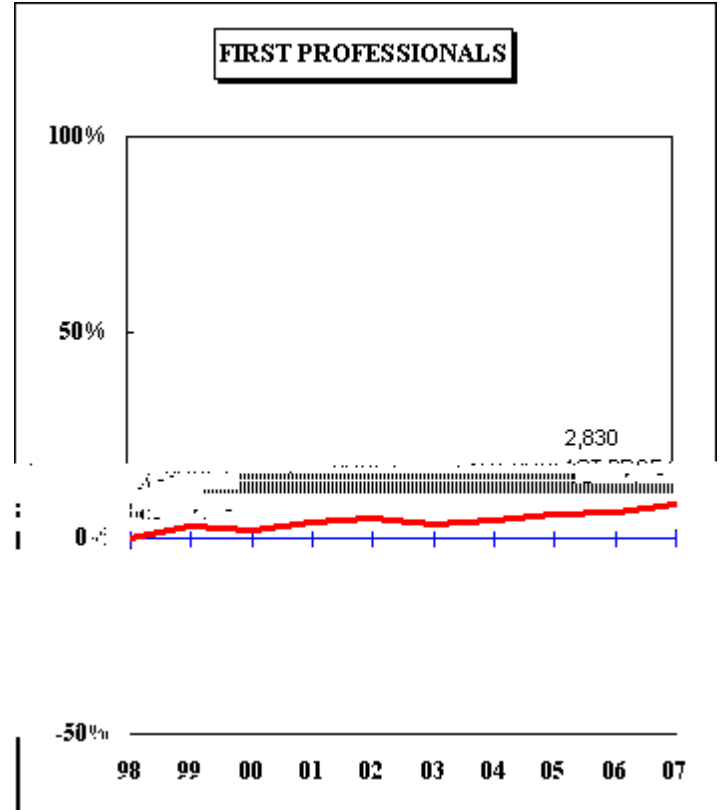
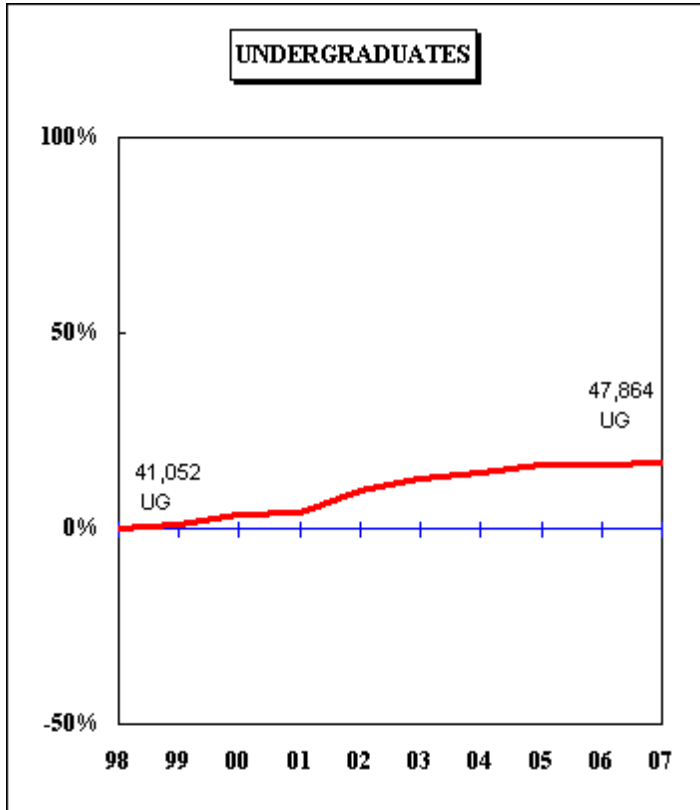
Vet Medicine FTE = Headcount

Caveats

First- and second-year students in the Medicine MD program at UMKC are included in the undergraduate counts of the Table 2 and Table 4 series.

Enrollment counts for students in "Off-Schedule" courses, which include intersession courses, short courses, Video Credit courses, and other courses which begin and end on dates other than those for the regular academic semester, are accumulated during the term in which the courses began and are reported the semester following their end date.

Figure 1.0: Rate of Change in Fall Headcount by Student Level and Campus, Fall 1998 to Fall 2007
UNIVERSITY OF MISSOURI SYSTEM



**Figure 1.1: Rate of Change in Fall Headcount by Student Level and Campus,
Fall 1998 to Fall 2007
UNIVERSITY OF MISSOURI-COLUMBIA**

**Figure 1.2: Rate of Change in Fall Headcount by Student Level and Campus,
Fall 1998 to Fall 2007**

**Figure 1.4: Rate of Change in Fall Headcount by Student Level and Campus,
Fall 1998 to Fall 2007**
UNIVERSITY OF MISSOURI-ST. LOUIS

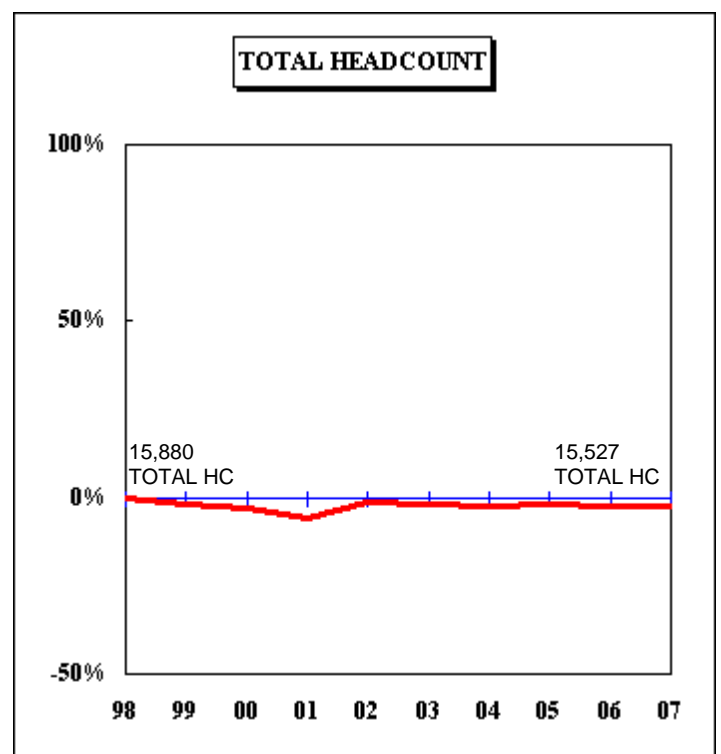
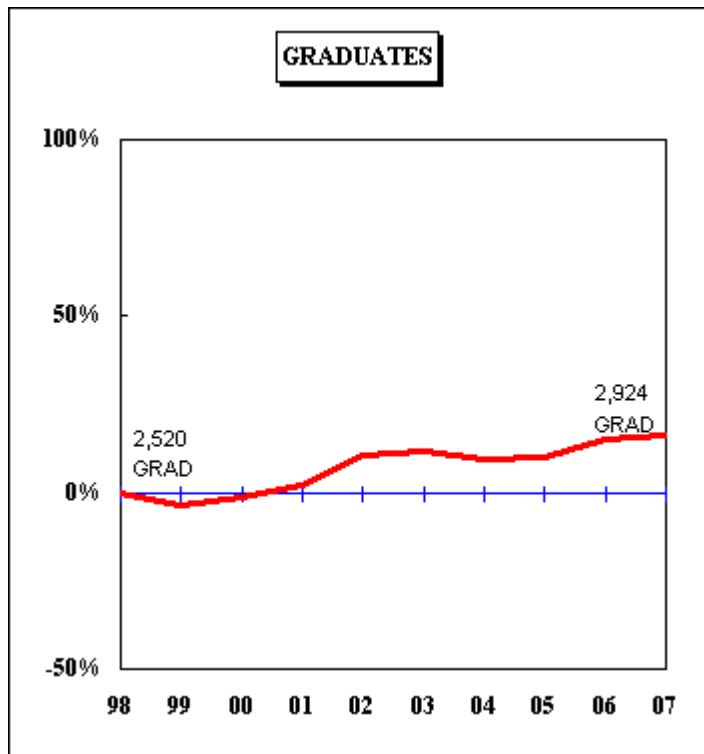
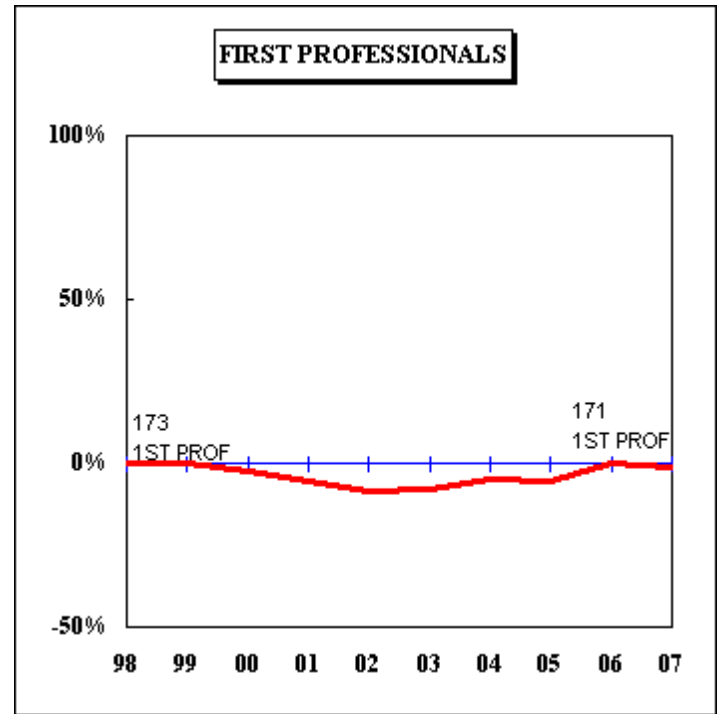
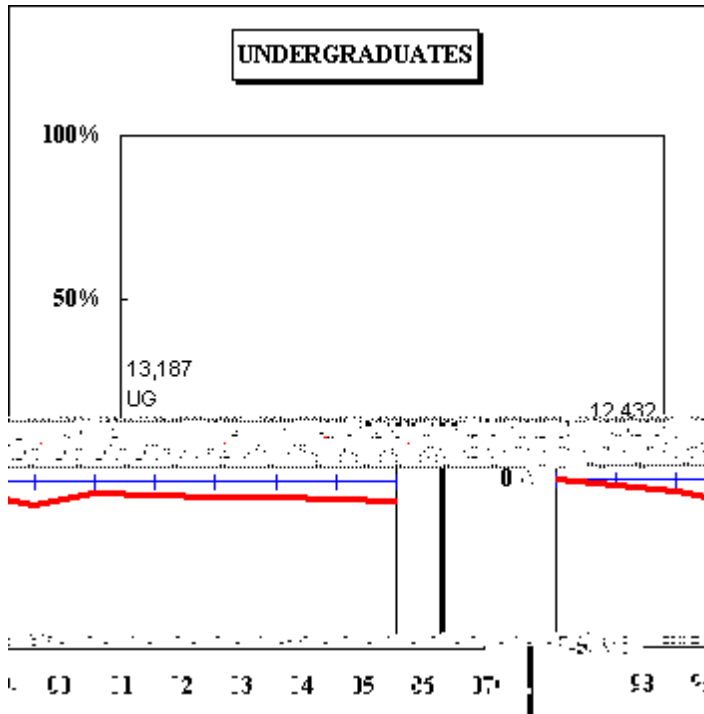


Table 2.0 Headcounts, Full-time Equivalence, and Student Credit Hours by Location, Fall 2003 to Fall 2007

	FS03	FS04	FS05	FS06	FS07	FS03	FS04	FS05	FS06	FS07	FS03	FS04	FS05	FS06	FS07	5-yr. Change
Headcount by Student Level																
Undergraduate																
Fresh & Soph DS	16,911	17,136	17,577	17,570	17,898	10	11	19	15	30	16,921	17,147	17,596	17,585	17,928	6%
Junior & Senior DS	22,516	22,993	23,702	23,876	23,862	124	116	153	147	222	22,640	23,109	23,855	24,023	24,084	6%
Nondegree	<u>855</u>	<u>764</u>	<u>763</u>	<u>784</u>	<u>737</u>	<u>5,905</u>	<u>5,947</u>	<u>5,525</u>	<u>5,449</u>	<u>5,115</u>	<u>6,760</u>	<u>6,711</u>	<u>6,288</u>	<u>6,233</u>	<u>5,852</u>	-13%
Total Undergraduate	40,282	40,893	42,042	42,230	42,497	6,039	6,074	5,697	5,611	5,367	46,321	46,967	47,739	47,841	47,864	3%
First Professional																
Dentistry (DDS)	360	381	388	393	401	0	0	0	0	0	360	381	388	393	401	11%
Law (JD)	994	974	972	971	956	0	0	0	0	0	994	974	972	971	956	-4%
Medicine (MD)	729	726	736	738	759	0	0	0	0	0	729	726	736	738	759	4%
Optometry (OD)	159	165	164	173	171	0	0	0	0	0	159	165	164	173	171	8%
Pharmacy (DPharm)	210	225	243	238	238	0	0	0	0	27	210	225	243	238	265	26%
Vet. Med. (DVM)	<u>256</u>	<u>257</u>	<u>267</u>	<u>271</u>	<u>278</u>	<u>0</u>	<u>0</u>	<u>0</u>	<u>0</u>	<u>0</u>	<u>256</u>	<u>257</u>	<u>267</u>	<u>271</u>	<u>278</u>	9%

Table 2.1 Headcounts, Full-time Equivalence, and Student Credit Hours by Location, Fall 2003 to Fall 2007

	<u>Columbia</u>										<u>Total</u>					5-yr. Change
	<u>On-Campus</u>					<u>Off-Campus</u>										
	FS03	FS04	FS05	FS06	FS07	FS03	FS04	FS05	FS06	FS07	FS03	FS04	FS05	FS06	FS07	
Headcount by Student Level																
Undergraduate																
Fresh & Soph DS	10,283	10,520	10,633	10,501	10,609	9	7	9	10	14	10,292	10,527	10,642	10,511	10,623	3%
Junior & Senior DS	9,638	9,929	10,268	10,588	10,637	97	85	108	105	126	9,735	10,014	10,376	10,693	10,763	11%
Nondegree	<u>245</u>	<u>192</u>	<u>225</u>	<u>209</u>	<u>180</u>	<u>169</u>	<u>150</u>	<u>92</u>	<u>71</u>	<u>20</u>	<u>414</u>	<u>342</u>	<u>317</u>	<u>280</u>	<u>200</u>	-52%
Total Undergraduate	20,166	20,641	21,126	21,298	21,426	275	242	209	186	160	20,441	20,883	21,335	21,484	21,586	6%
First Professional																
Law (JD)	481	439	444	456	458	0	0	0	0	0	481	439	444	456	458	-5%
Medicine (MD)	372	373	372	375	375	0	0	0	0	0	372	373	372	375	375	1%
Vet. Med. (DVM)	<u>256</u>	<u>257</u>	<u>267</u>	<u>271</u>	<u>278</u>	<u>0</u>	<u>0</u>	<u>0</u>	<u>0</u>	<u>0</u>	<u>256</u>	<u>257</u>	<u>267</u>	<u>271</u>	<u>278</u>	9%
Total First Professional	1,109	1,069	1,083	1,102	1,111	0	0	0	0	0	1,109	1,069	1,083	1,102	1,111	0%
Graduate																
Masters & Ed. Spec.	2,192	2,117	2,196	2,160	2,192	576	584	695	800	914	2,768	2,701	2,891	2,960	3,106	12%
Doctoral	1,832	1,848	1,990	2,019	2,029	78	95	82	82	78	1,910	1,943	2,072	2,101	2,107	10%
Nondegree	<u>228</u>	<u>201</u>	<u>223</u>	<u>185</u>	<u>215</u>	<u>349</u>	<u>206</u>	<u>326</u>	<u>352</u>	<u>280</u>	<u>577</u>	<u>407</u>	<u>549</u>	<u>537</u>	<u>495</u>	-14%
Total Graduate	4,252	4,166	4,409	4,364	4,436	1,003	885	1,103	1,234	1,272	5,255	5,051	5,512	5,598	5,708	9%
Grand Total																
Headcount	25,527	25,876	26,618	26,764	26,973	1,278	1,127	1,312	1,420	1,432	26,805	27,003	27,930	28,184	28,405	6%
FTE Enrollments by Student Level																
Undergraduate	18,320	18,905	19,372.1	19,712.3	19,785.3	86	74	67.7	68.3	61.3	18,406	18,979	19,440	19,781	19,847	8%
First Professional	1,109	1,048	1,066.2	1,083.4	1,093.8	0	0	0.0	0.0	0.0	1,109	1,048	1,066	1,083	1,094	-1%
Graduate	<u>2,664</u>	<u>2,625</u>	<u>2,770.1</u>	<u>2,820.9</u>	<u>2,815.4</u>	<u>376</u>	<u>348</u>	<u>427.5</u>	<u>497.8</u>	<u>524.6</u>	<u>3,040</u>	<u>2,973</u>	<u>3,198</u>	<u>3,319</u>	<u>3,340</u>	10%
Total FTE	22,093	22,578	23,208.4	23,616.6	23,694.5	462	422	495.2	566.1	585.9	22,555.0	23,000.0	23,703.6	24,182.7	24,280.4	8%
SCH Produced by Student Level																
Undergraduate	274,806	283,579	290,581	295,684	296,780	1,283	1,111	1,016	1,025	919	276,089	284,690	291,597	296,709	297,699	8%
First Professional	18,003	16,131	17,050	17,792	17,256	0	0	0	0	0	18,003	16,131	17,050	17,792	17,256	-4%
Graduate	<u>31,972</u>	<u>31,496</u>	<u>33,241</u>	<u>33,851</u>	<u>33,785</u>	<u>4,515</u>	<u>4,177</u>	<u>5,130</u>	<u>5,973</u>	<u>6,295</u>	<u>36,487</u>	<u>35,673</u>	<u>38,371</u>	<u>39,824</u>	<u>40,080</u>	10%
Total SCH	324,781	331,206	340,872	347,327	347,821	5,798	5,288	6,146	6,998	7,214	330,579	336,494	347,018	354,325	355,035	7%

Source: EMSAS Fall Enrollment file

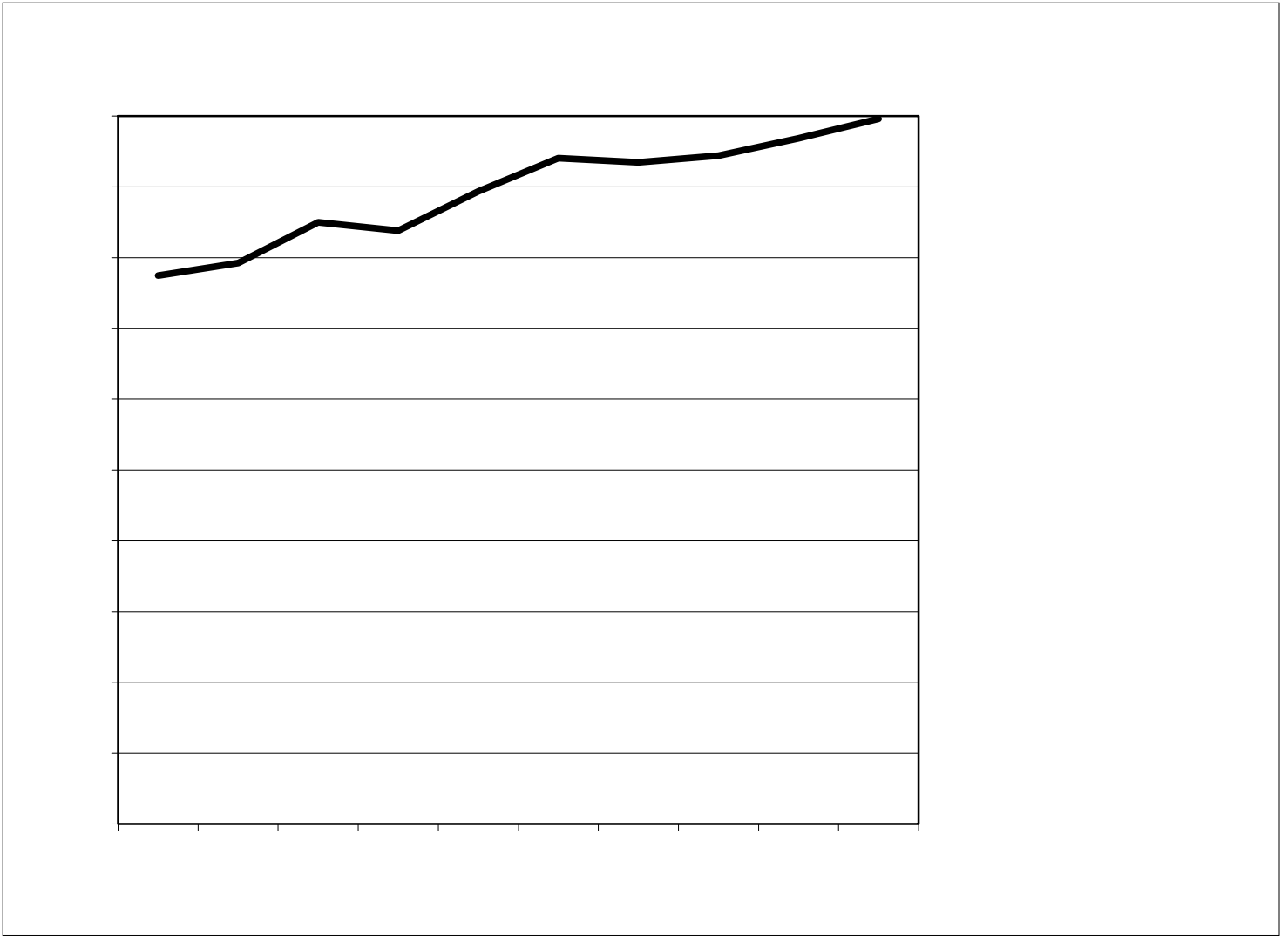
Table 2.2 Headcounts, Full-time Equivalence, and Student Credit Hours by Location, Fall 2003 to Fall 2007

	FS03	FS04	FS05	FS06	FS07	FS03	FS04	FS05	FS06	FS07	FS03	FS04	FS05	FS06	FS07	5-yr. Change
Headcount by Student Level																
Undergraduate																
Fresh & Soph DS	2,477	2,612	2,865	2,880	3,029	0	1	0	0	13	2,477	2,613	2,865	2,880	3,042	23%
Junior & Senior DS	4,035	4,180	4,200	4,187	3,890	0	0	0	0	43	4,035	4,180	4,200	4,187	3,933	-3%
Nondegree	<u>334</u>	<u>305</u>	<u>273</u>	<u>284</u>	<u>255</u>	<u>2,321</u>	<u>2,295</u>	<u>2,149</u>	<u>2,032</u>	<u>1,864</u>	<u>2,655</u>	<u>2,600</u>	<u>2,422</u>	<u>2,316</u>	<u>2,119</u>	-20%
Total Undergraduate	6,846	7,097	7,338	7,351	7,174	2,321	2,296	2,149	2,032	1,920	9,167	9,393	9,487	9,383	9,094	-1%

Table 2.3 Headcounts, Full-time Equivalence, and Student Credit Hours by Location, Fall 2003 to Fall 2007

	<u>Missouri S&T</u>															5-yr. Change
	<u>On-Campus</u>					<u>Off-Campus</u>					<u>Total</u>					
	FS03	FS04	FS05	FS06	FS07	FS03	FS04	FS05	FS06	FS07	FS03	FS04	FS05	FS06	FS07	
Headcount by Student Level																
Undergraduate																
Fresh & Soph DS	1,827	1,896	1,915	1,993	2,127	0	0	0	0	0	1,827	1,896	1,915	1,993	2,127	16%
Junior & Senior DS	2,121	2,122	2,304	2,472	2,578	0	0	0	0	0	2,121	2,122	2,304	2,472	2,578	22%
Nondegree	<u>52</u>	<u>49</u>	<u>29</u>	<u>34</u>	<u>35</u>	<u>89</u>	<u>52</u>	<u>63</u>	<u>16</u>	<u>12</u>	<u>141</u>	<u>101</u>	<u>92</u>	<u>50</u>	<u>47</u>	-67%
Total Undergraduate	4,000	4,067	4,248	4,499	4,740	89	52	63	16	12	4,089	4,119	4,311	4,515	4,752	16%
Graduate																
Masters & Ed. Spec.	702	479	487	540	557	244	363	410	434	502	946	842	897	974	1,059	12%
Doctoral	339	370	357	338	331	7	7	12	12	13	346	377	369	350	344	-1%
Nondegree	<u>24</u>	<u>18</u>	<u>8</u>	<u>12</u>	<u>8</u>	<u>54</u>	<u>48</u>	<u>15</u>	<u>7</u>	<u>3</u>	<u>78</u>	<u>66</u>	<u>23</u>	<u>19</u>	<u>11</u>	-86%
Total Graduate	1,065	867	852	890	896	305	418	437	453	518	1,370	1,285	1,289	1,343	1,414	3%
Grand Total																
Headcount	5,065	4,934	5,100	5,389	5,636	394	470	500	469	530	5,459	5,404	5,600	5,858	6,166	13%
FTE Enrollments by Student Level																
Undergraduate	3,750	3,805	3,986.6	4,196.7	4,480.5	19	11	13.4	3.1	2.7	3,769	3,816	4,000	4,200	4,483	19%
Graduate	<u>694</u>	<u>579</u>	<u>587.9</u>	<u>615.2</u>	<u>611.1</u>	<u>141</u>	<u>199</u>	<u>212.0</u>	<u>167.7</u>	<u>228.7</u>	<u>835</u>	<u>778</u>	<u>800</u>	<u>783</u>	<u>840</u>	1%
Total FTE	4,444	4,384	4,574.5	4,811.9	5,091.6	160	210	225.4	170.8	231.4	4,604.0	4,594.0	4,799.9	4,982.7	5,323.0	16%
SCH Produced by Student Level																
Undergraduate	56,255	57,072	59,799	62,950	67,208	290	158	201	46	40	56,545	57,230	60,000	62,996	67,248	19%
Graduate	<u>8,329</u>	<u>6,953</u>	<u>7,055</u>	<u>7,382</u>	<u>7,333</u>	<u>1,691</u>	<u>2,392</u>	<u>2,544</u>	<u>2,012</u>	<u>2,744</u>	<u>10,020</u>	<u>9,345</u>	<u>9,599</u>	<u>9,394</u>	<u>10,077</u>	1%
Total SCH	64,584	64,025	66,854	70,332	74,541	1,981	2,550	2,745	2,058	2,784	66,565	66,575	69,599	72,390	77,325	16%

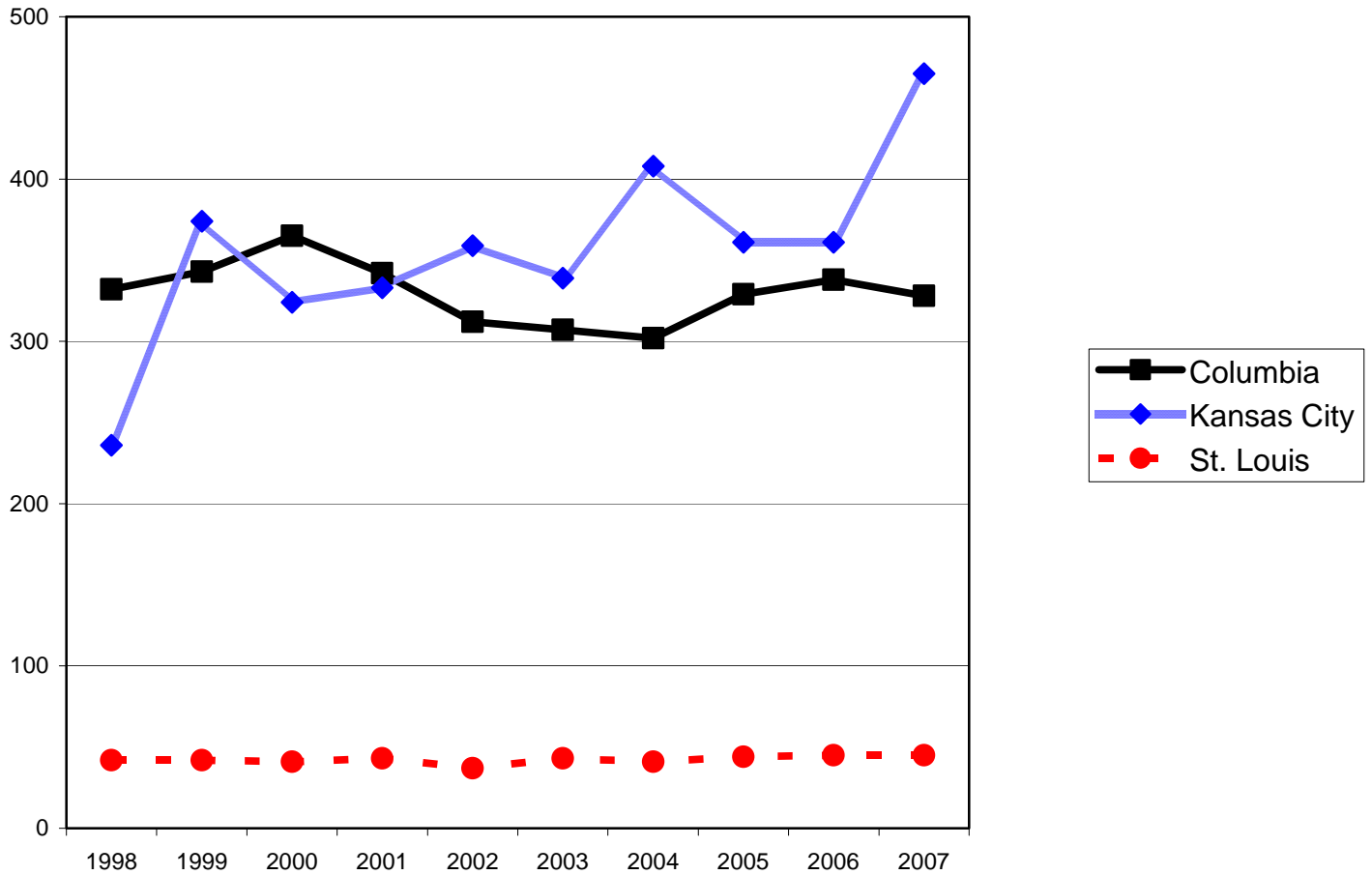
Source: EMSAS Fall Enrollment file



First-time College Freshmen History, 1998 to 2007

Campus	1998	1999	2000	2001	2002	2003	2004	2005	2006	2007
Columbia	3,874	3,961	4,250	4,191	4,468	4,702	4,673	4,720	4,842	4,981
Kansas City	671	696	715	778	790	799	939	1,048	959	959
MO S&T	747	697	696	715	815	897	856	892	977	1,050
St. Louis	726	674	631	663	533	542	451	536	530	502
Total	6,018	6,028	6,292	6,347	6,606	6,940	6,919	7,196	7,308	7,492

Figure 3c. New First Professional Student History by Campus, 1998 to 2007



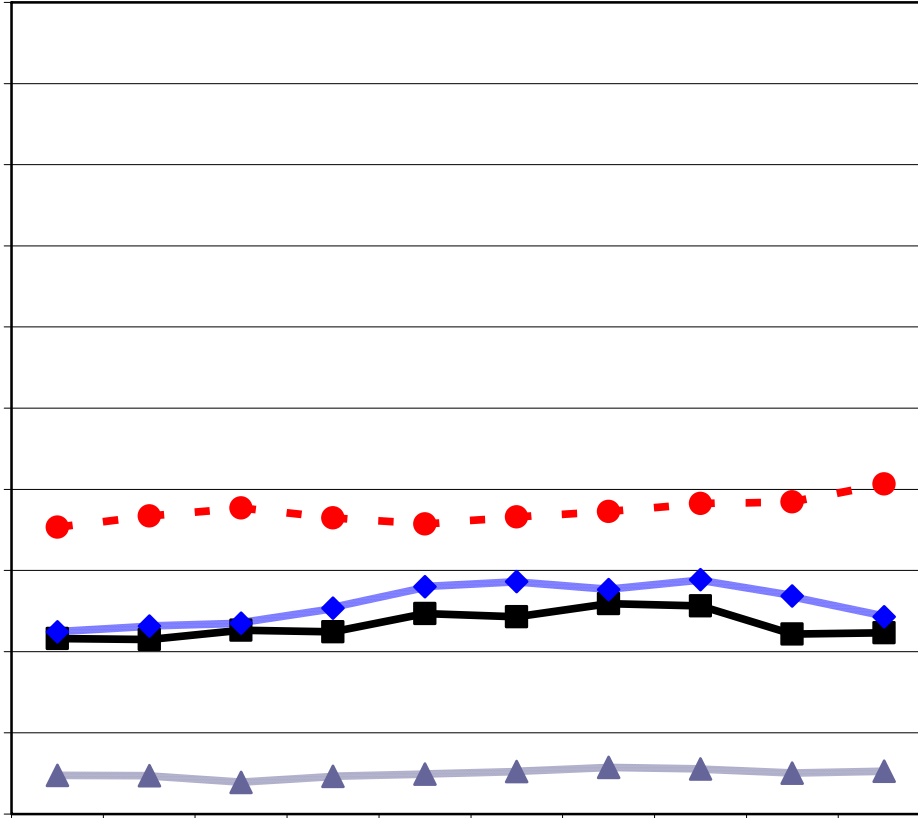
Source: EMSAS Fall Enrollment file
IR&P/LCB 3/08

New First Professional Student History By Campus, 1998 to 2007

Campus	1998	1999	2000	2001	2002	2003	2004	2005	2006	2007
Columbia	332	343	365	342	312	307	302	329	338	328
Kansas City	236	374	324	333	359	339	408	361	361	465
St. Louis	42	42	41	43	37	43	41	44	45	45
Total	610	759	730	718	708	689	751	734	744	838

Table 3. On-Campus New Student Headcount, Fall 2003 - Fall 2007

	2003	2004	2005	2006	2007	5 yr. Change
Freshmen						
Degree-Seeking	4,669	4,668	4,718	4,836	4,980	7%
Non Degree-Seeking	33	5	2	6	1	-97%
Undergraduate Transfers						
Degree-Seeking	1,122	1,217	1,178	1,030	986	-12%
Non Degree-Seeking	93	112	164	50	66	-1.0697



First-time On-Campus Undergraduate Transfer Student History by Campus, 1998 to 2007

Campus	1998	1999	2000	2001	2002	2003	2004	2005	2006	2007
Columbia	1,080	1,074	1,131	1,122	1,234	1,215	1,295	1,281	1,108	1,116
Kansas City	1,122	1,157	1,175	1,268	1,399	1,432	1,382	1,443	1,343	1,214
MO S&T	239	236	195	232	247	263	287	278	252	264
St. Louis	1,767	1,835	1,884	1,823	1,787	1,829	1,863	1,912	1,922	2,032
Total	4,208	4,302	4,385	4,445	4,667	4,739	4,827	4,914	4,625	4,626

Level	2003	2004	2005	2006	2007	5 yr. Change
Undergraduate						
Freshman & Soph DS	13,105	13,215	13,482	13,412	13,504	3%
Junior & Senior DS	15,101	15,525	16,017	16,335	16,378	8%
Nondegree	100	88	117	124	138	38%
Total System Full-time Resident Undergraduate	28,306	28,828	29,616	29,871	30,020	6%
First Professional						
Dentistry (DDS)	222	231	239	252	265	19%
Law (JD)	800	778	804	778	771	-4%
Medicine (MD)	624	619	533	611	641	3%
Optometry (OD)	90	99	87	83	86	-4%
Pharmacy (Dpharm)	194	205	228	225	252	30%
Vet. Med (DVM)	240	201	244	254	255	6%
Total System Full-time Resident 1st Professional	2,170	2,133	2,135	2,203	2,270	5%
Graduate						
Masters						

Table 4.0b Non-Resident Headcount History by Student Level, Load, and Campus, Fall 2003 to Fall 2007

Level	2003	2004	2005	2006	2007	5 yr. Change
Undergraduate						
Freshman & Soph DS	2,630	2,823	2,988	3,051	3,191	21%
Junior & Senior DS	2,408	2,556	2,724	2,786	2,817	17%
Nondegree	46	53	92	96	111	141%
Total System Full-time Non-Resident Undergraduate	5,084	5,432	5,804	5,933	6,119	20%
First Professional						
Dentistry (DDS)	138	150	149	141	136	-1%
Law (JS)						

Table 4.1a Resident Headcount History by Student Level, Load, and Campus, Fall 2003 to Fall 2007

Level	2003	2004	2005	2006	2007	5 yr. Change
Undergraduate						
Freshman & Soph DS	8,452	8,609	8,552	8,463	8,438	0%
Junior & Senior DS	8,060	8,232	8,504	8,845	8,769	9%
Nondegree	5	5	3	1	9	80%

Table 4.1b Non-Resident Headcount History by Student Level, Load, and Campus, Fall 2003 to Fall 2007

Level	2003	2004	2005	2006	2007	5 yr. Change
Undergraduate Freshman & Soph DS	1,519	1,633	1,803	1,790	1,864	

Table 4.2a Resident Headcount History by Student Level, Load, and Campus, Fall 2003 to Fall 2007

Level	2003	2004	2005	2006	2007	5 yr. Change
Undergradua						

Table 4.3a Resident Headcount History by Student Level, Load, and Campus, Fall 2003 to Fall 2007

Level	2003	2004	2005	2006	2007	5 yr. Change
Undergraduate						
Freshman & Soph DS	1,372	1,417	1,453	1,497	1,607	17%
Junior & Senior DS	1,561	1,576	1,677	1,825	1,923	23%
Nondegree	4	4	6	6	1	-75%
Total MO S&T Full-time Resident Undergraduate	2,937	2,997	3,136	3,328	3,531	20%
Graduate						
Masters& Ed. Spec.	147	124	141	132	137	-7%
Doctoral	44	55	67	66	84	

Table 4.4a Resident Headcount History by Student Level, Load, and Campus, Fall 2003 to Fall 2007

Level	2003	2004	2005	2006	2007	5 yr. Change
UNIVERSITY OF MISSOURI-ST. LOUIS FULL-TIME RESIDENT HEADCOUNT						
Undergraduate						
Freshman & Soph DS	1,603	1,428	1,521	1,504	1,497	-7%
Junior & Senior DS	3,416	3,508	3,621	3,521	3,651	7%
Nondegree	82	65	91	107	101	23%
Total UMSL Full-time Resident Undergraduate	5,101	5,001	5,233	5,132	5,249	3%
First Professional						
Optometry (OD)	90	99	87	83	86	-4%
Total UMSL Full-time Resident 1st Professional	90	99	87	83	86	-4%
Graduate						
Masters& Ed. Spec.	326	317	381	361	401	23%
Doctoral	50	37	48	65	59	18%
Nondegree	1	1	8	4	16	1500%
Total UMSL Full-time Resident Graduate	377	355	437	430	476	26%
Total UMSL Full-time Resident Headcount	5,568	5,455	5,757	5,645	5,811	4%
UNIVERSITY OF MISSOURI-ST. LOUIS PART-TIME RESIDENT HEADCOUNT						
Undergraduate						
Freshman & Soph DS	484	451	428	437	379	-22%
Junior & Senior DS	2,862	2,775	2,767	2,593	2,570	-10%
Nondegree	3,433	3,555	3,271	3,397	3,305	-4%
Total UMSL Part-time Resident Undergraduate	6,779	6,781	6,466	6,427	6,254	-8%
First Professional						
Optometry (OD)	0	0	0	0	0	
Total UMSL Part-time Resident 1st Professional	0	0	0	0	0	
Graduate						
Masters& Ed. Spec.	1,621	1,605	1,559	1,578	1,522	-6%
Doctoral	241	250	255	260	282	17%
Nondegree	125	118	79	93	93	-26%
Total UMSL Part-time Resident Graduate	1,987	1,973	1,893	1,931	1,897	-5%
Total UMSL Part-time Resident Headcount	8,766	8,754	8,359	8,358	8,151	-7%
UNIVERSITY OF MISSOURI-ST. LOUIS TOTAL RESIDENT HEADCOUNT						
Undergraduate						
Freshman & Soph DS	2,087	1,879	1,949	1,941	1,876	-10%
Junior & Senior DS	6,278	6,283	6,388	6,114	6,221	-1%
Nondegree	3,515	3,620	3,362	3,504	3,406	-3%
Total UMSL Resident Undergraduate	11,880	11,782	11,699	11,559	11,503	-3%
First Professional						
Optometry (OD)	90	99	87	83	86	-4%
Total UMSL Resident 1st Professional	90	99	87	83	86	-4%
Graduate						
Masters& Ed. Spec.	1,947	1,922	1,940	1,939	1,923	-1%
Doctoral	291	287	303	325	341	17%
Nondegree	126	119	87	97	109	-13%
Total UMSL Resident Graduate	2,364	2,328	2,330	2,361	2,373	0%
Grand Total UMSL Resident Headcount	14,334	14,209	14,116	14,003	13,962	-3%

Table 4.4b Non-Resident Headcount History by Student Level, Load, and Campus, Fall 2003 to Fall 2007

Level	2003	2004	2005	2006	2007	5 yr. Change
Undergraduate						

Table 5. Headcount Students by